



# CATÁLOGO DE PLACAS DRAULITEK

## TAPAS DE CIERRE PARA DISTRIBUIDORES

PAGINA	NG-6 (CETOP 3) NG-10 (CETOP 5)	PAGINA	NG-16 (CETOP 7) NG-25 (CETOP 8)
1.1		1.2	

## TAPAS DE CIERRE PARA DISTRIBUIDORES CONEXIONADAS

PAGINA	NG-6 (CETOP 3) NG-10 (CETOP 5)	PAGINA	NG-6 (CETOP 3) NG-10 (CETOP 5)
1.3		1.3	

## PLACAS INTERMEDIAS PARA DISTRIBUIDORES

PAGINA	NG-6 (CETOP 3) NG-10 (CETOP 5)	PAGINA	NG-6 (CETOP 3) NG-10 (CETOP 5)
1.4		1.4	
1.4		1.4	
1.4			

# CATÁLOGO DE PLACAS DRAULITEK

## PLACAS BASE PARA DISTRIBUIDORES

PAGINA		PAGINA	
2.1.1	NG-6 (CETOP 3) SALIDAS LATERALES 	2.3.1	NG-10 (CETOP 5) SALIDAS LATERALES 
2.1.2	NG-6 (CETOP 3) SALIDAS TRASERAS 	2.3.1	NG-10 (CETOP 5) SALIDAS TRASERAS 
2.1.3	NG-6 (CETOP 3) SALIDAS MIXTAS 		
2.2.1	NG-6 (CETOP 3) SALIDAS TRASERAS 		
2.2.1	NG-6 (CETOP 3) SALIDAS MIXTAS 		

## BLOQUES DE DISTRIBUCION DE 1 A 10 ESTACIONES NG6 (CETOP-3)

PAGINA	NG-6 (CETOP 3)	
3.1.1	SALIDAS LATERALES (DE 1 A 10 ESTACIONES)	
3.1.2 3.1.3	NG-6 (CETOP 3) SALIDAS LATERALES (DE 1 ESTACION) (DE 2 A 10 ESTACIONES)	
3.1.4 V2	NG-6 (CETOP 3) SALIDAS LATERALES (DE 2 A 9 ESTACIONES)	
3.2.1 V2	NG-6 (CETOP 3) SALIDAS POSTERIORES (DE 1 A 10 ESTACIONES)	
3.2.2 V2 3.2.3 V2	NG-6 (CETOP 3) SALIDAS POSTERIORES (DE 1 ESTACION) (DE 2 A 10 ESTACIONES)	
3.2.4 V2	NG-6 (CETOP 3) SALIDAS POSTERIORES (DE 2 A 9 ESTACIONES)	

## BLOQUES DE DISTRIBUCION DE 1 A 10 ESTACIONES NG10 (CETOP-5)

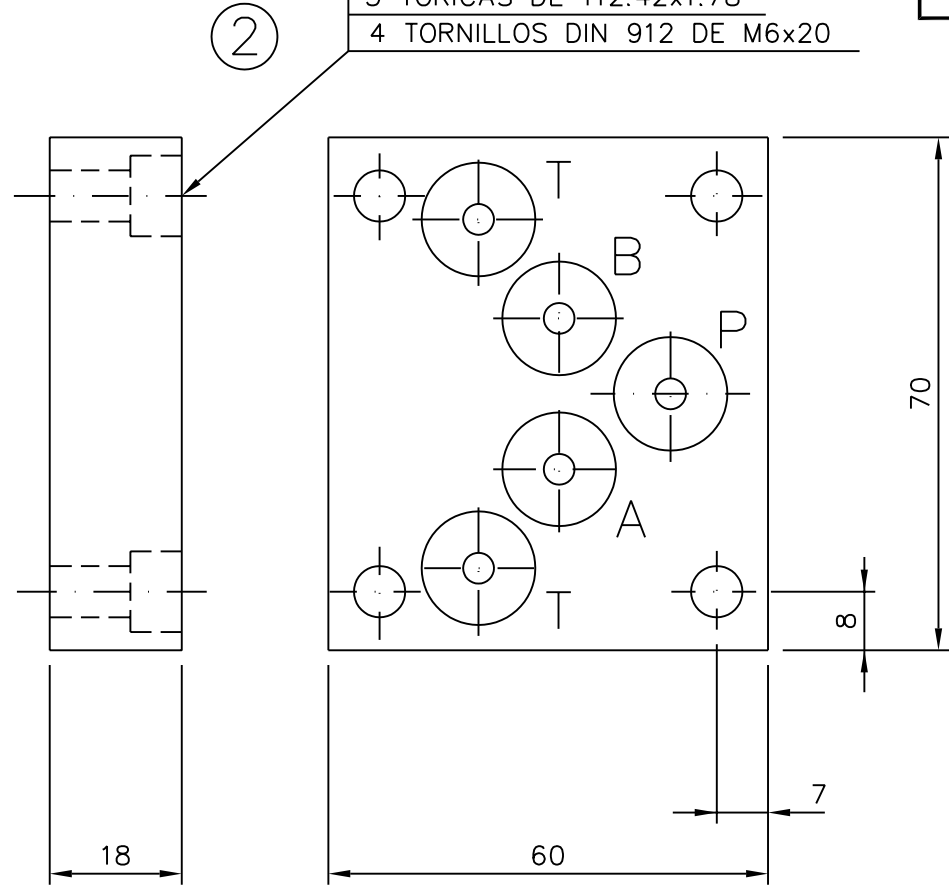
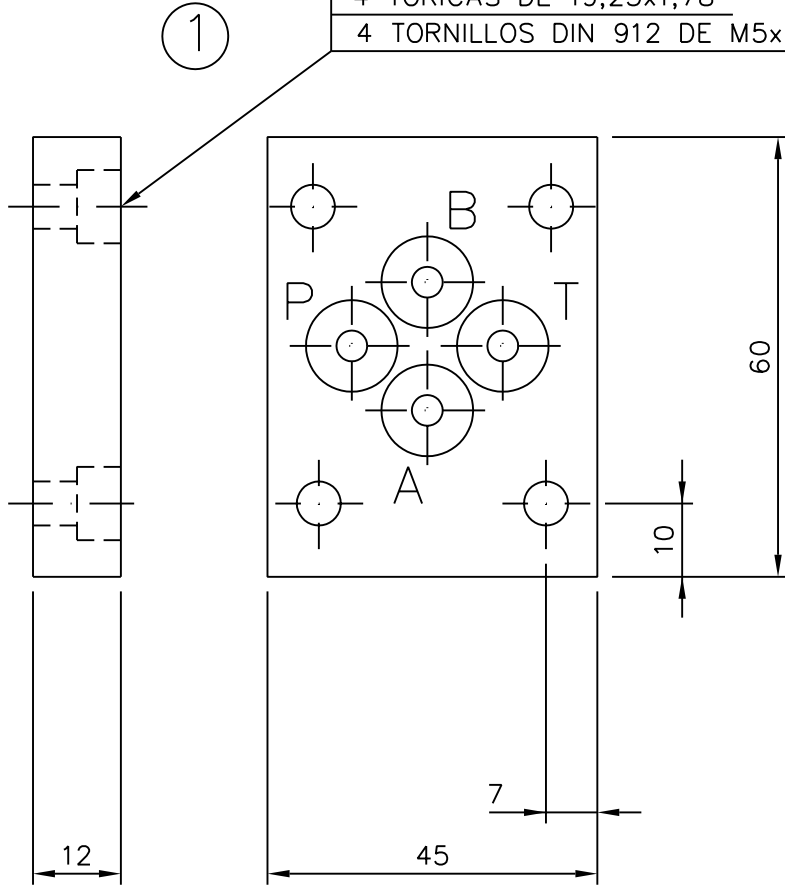
PAGINA	NG-10 (CETOP 5) SALIDAS LATERALES	
4.1.1	(DE 1 A 10 ESTACIONES)	
4.1.2	(DE 1 ESTACION)	
4.1.3	(DE 2 A 10 ESTACIONES)	
4.1.4	(DE 2 A 9 ESTACIONES)	
4.2.1 V2	NG-10 (CETOP 5) SALIDAS POSTERIORES	(DE 1 A 10 ESTACIONES)
4.2.2 V2	(DE 1 ESTACION)	
4.2.3 V2	(DE 2 A 10 ESTACIONES)	
4.2.4 V2	(DE 2 A 9 ESTACIONES)	

SE SUMINISTRA CON:

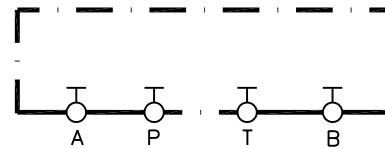
- 4 TORICAS DE  $\varnothing 9,25 \times 1,78$
- 4 TORNILLOS DIN 912 DE M5x15

SE SUMINISTRA CON:

- 5 TORICAS DE  $\varnothing 12,42 \times 1,78$
- 4 TORNILLOS DIN 912 DE M6x20



TAPAS DE CIERRE PARA DISTRIBUIDORES		
REFERENCIA	TAMAÑO	
PC0006.000.0000	1	NG-6 (CETOP 03)
PC0010.000.0000	2	NG-10 (CETOP 05)

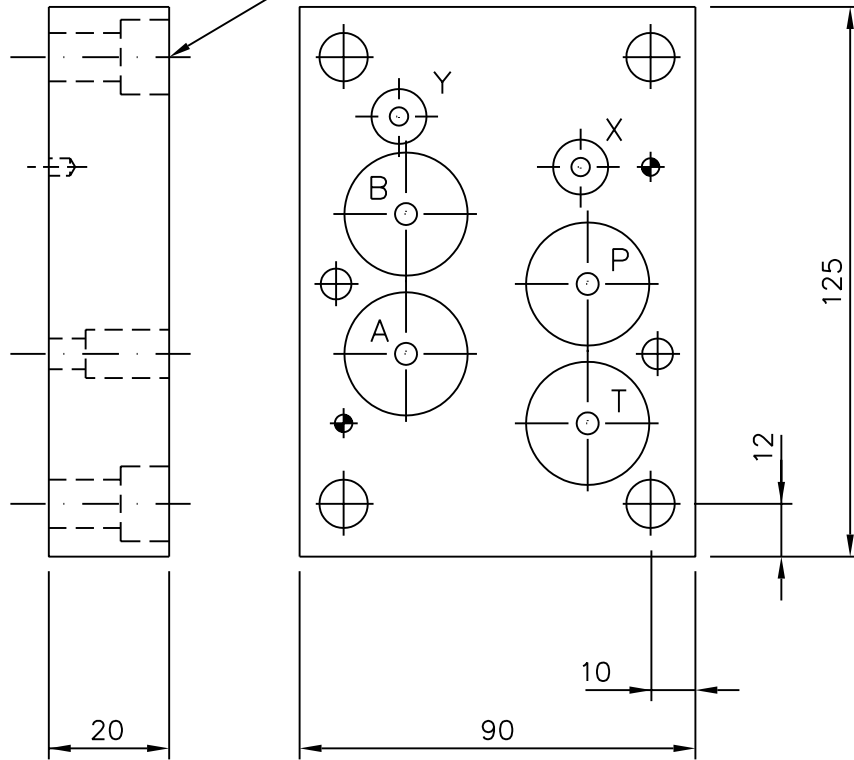


**DRAULITEK**

SE SUMINISTRA CON:

- 4 TORNILLOS DIN 912 DE M10x25
- 2 TORNILLOS DIN 912 DE M6x20
- 4 TORICAS DE  $\varnothing 21,19 \times 3,53$
- 2 TORICAS DE  $\varnothing 9,25 \times 1,78$
- 2 PASADORES DIN 7.343 DE 15

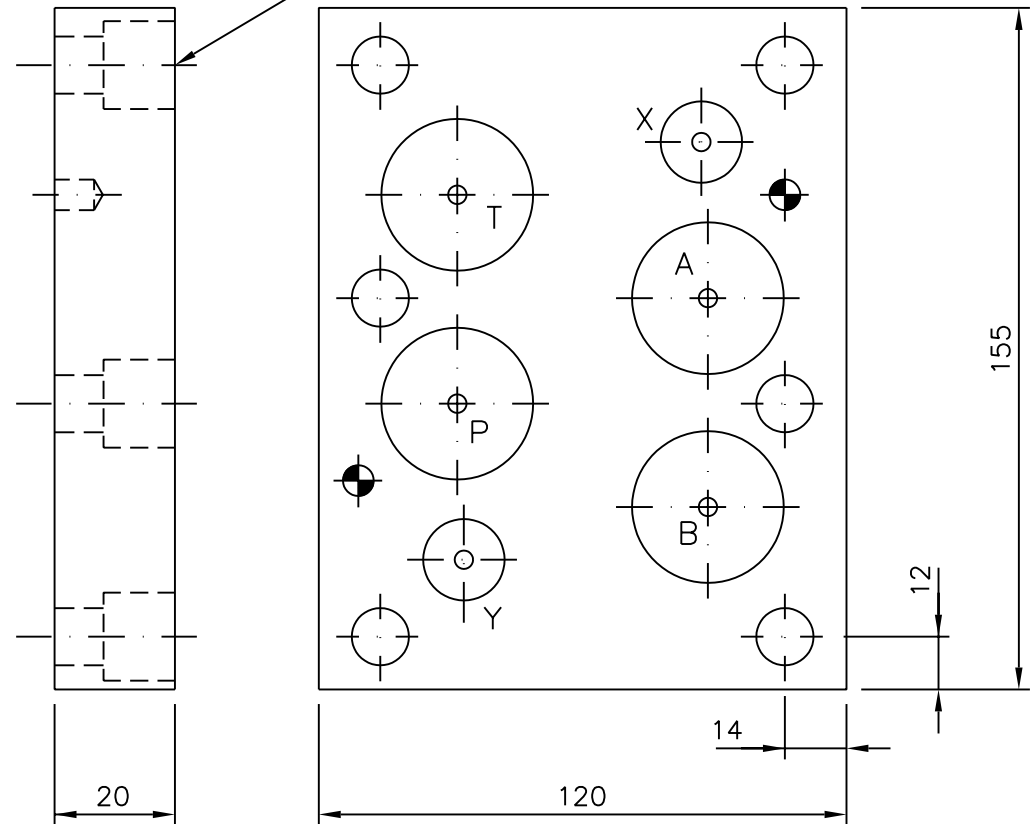
1



SE SUMINISTRA CON:

- 6 TORNILLOS DIN 912 DE M12x25
- 4 TORICAS DE  $\varnothing 28,17 \times 3,53$
- 2 TORICAS DE  $\varnothing 13,94 \times 2,62$
- 2 PASADORES DIN 7.343 DE 18

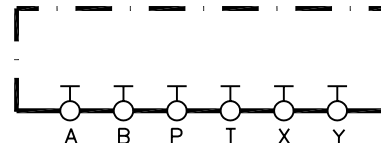
2



1.2

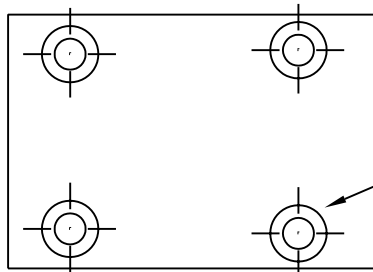
TAPAS DE CIERRE PARA DISTRIBUIDORES

REFERENCIA	TAMAÑO	
PC0016.000.0000	1	NG-16 (CETOP 07)
PC0025.000.0000	2	NG-25 (CETOP 08)



**DRAULITEK**

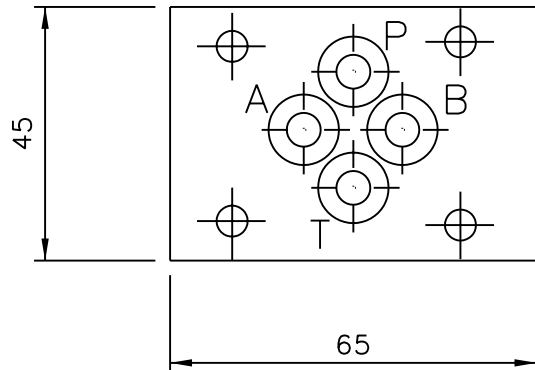
1



SE SUMINISTRA CON:  
 4 TORICAS DE 19,25x1,78  
 4 TORNILLOS DIN 912 DE M5x25

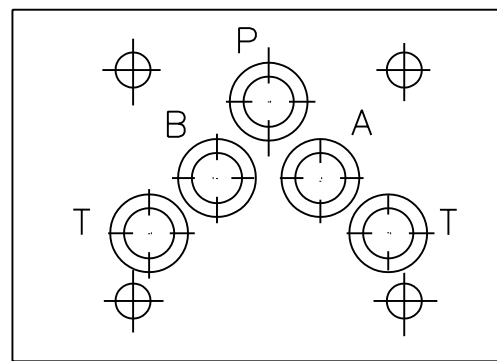
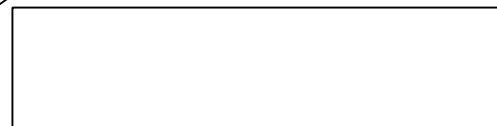
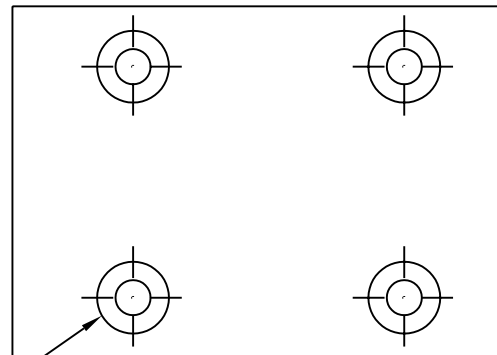


SE SUMINISTRA CON:  
 5 TORICAS DE 12,42x1,78  
 4 TORNILLOS DIN 912 DE M6x20

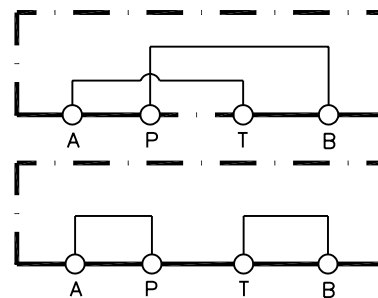


1.3

2



TAPAS DE CIERRE PARA DISTRIBUIDORES CONEXIONADAS			
REFERENCIA	TIPO		CONEXION
PC0006.000.PABT	1	NG-6 (CETOP 03)	P con A y B con T
PC0006.000.PBAT	1	NG-6 (CETOP 03)	P con B y A con T
PC0010.000.PABT	2	NG-10 (CETOP 05)	P con A y B con T
PC0010.000.PBAT	2	NG-10 (CETOP 05)	P con B y A con T

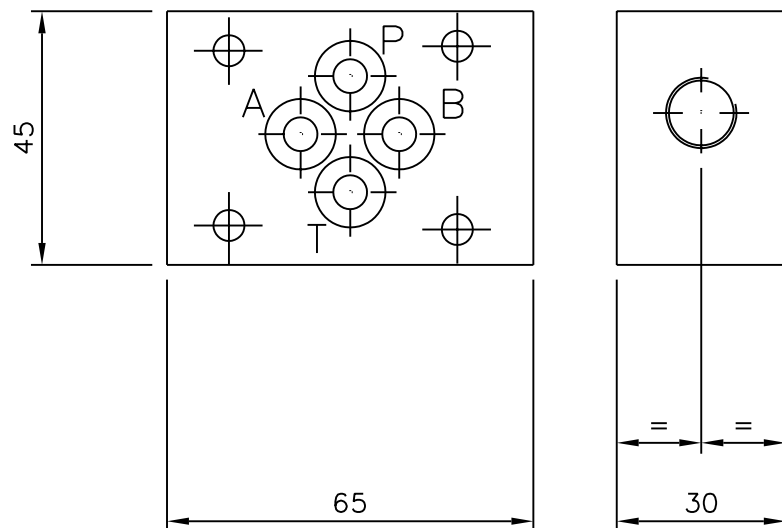


**DRAULITEK**



SE SUMINISTRA CON:  
4 TORICAS DE  $\varnothing 9,25 \times 1,78$

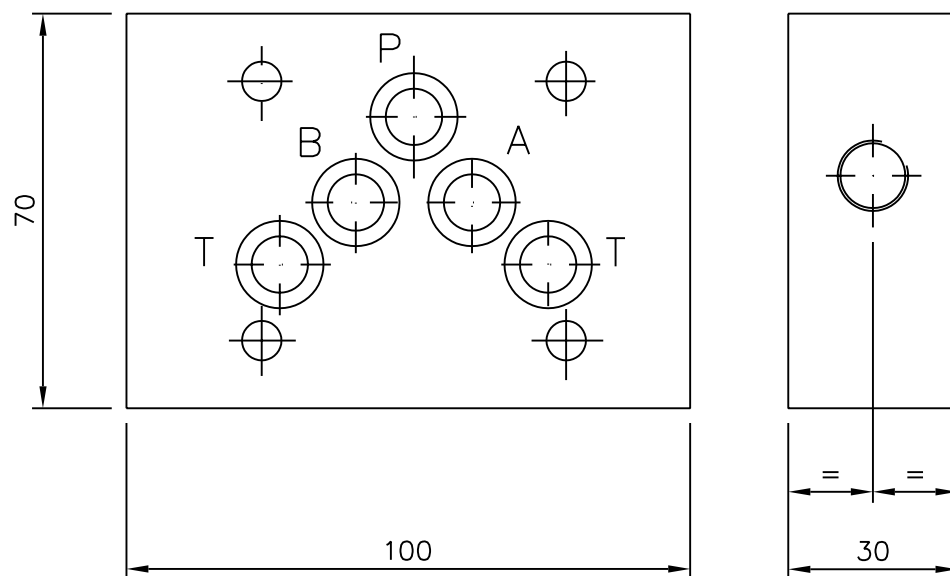
①



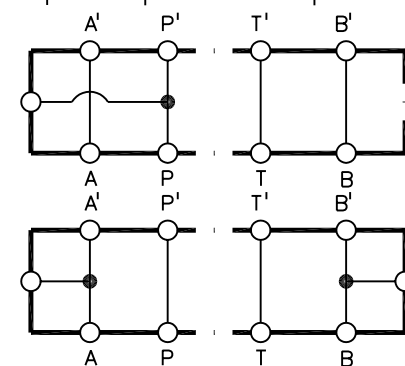
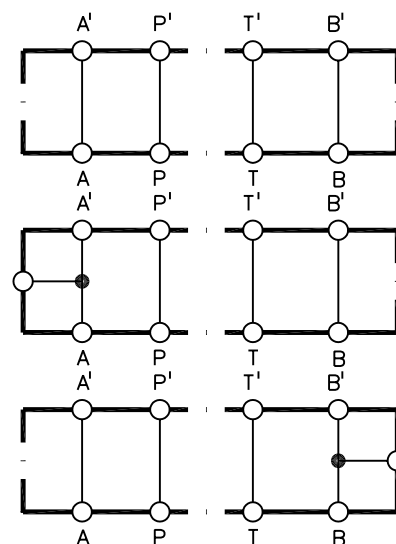
SE SUMINISTRA CON:  
5 TORICAS DE  $\varnothing 12,42 \times 1,78$

②

1.4

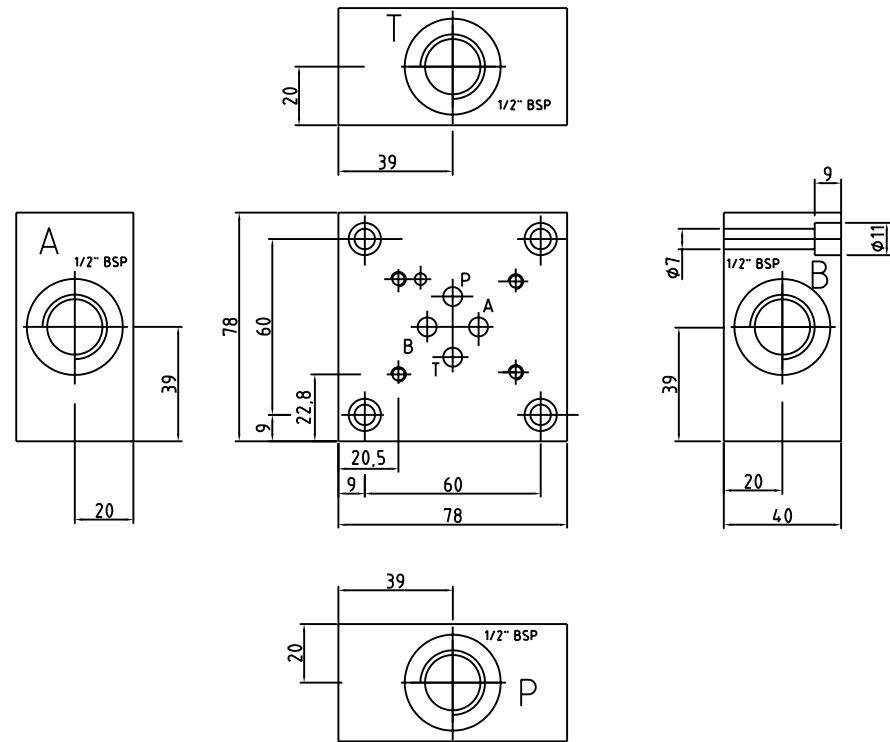
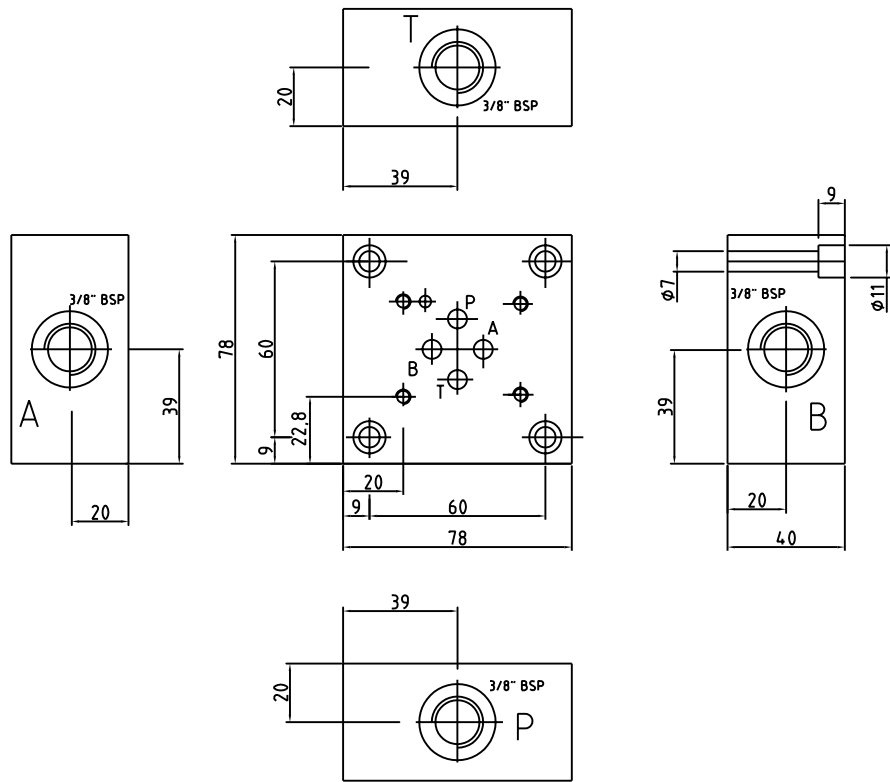


PLACAS INTERMEDIAS PARA DISTRIBUIDORES				
REFERENCIA	TIPO		SALIDA	ROSCA
PI0006.S00.0000	1	NG-6 (CETOP 03)	SIN TOMA	—
PI0006.SP0.0014	1	NG-6 (CETOP 03)	TOMA DE P	1/4" G
PI0006.SA0.0014	1	NG-6 (CETOP 03)	TOMA DE A	1/4" G
PI0006.SB0.0014	1	NG-6 (CETOP 03)	TOMA DE B	1/4" G
PI0006.SAB.0014	1	NG-6 (CETOP 03)	TOMA DE A Y B	1/4" G
PI0010.S00.0000	2	NG-10 (CETOP 05)	SIN TOMA	—
PI0010.SP0.0014	2	NG-10 (CETOP 05)	TOMA DE P	1/4" G
PI0010.SA0.0014	2	NG-10 (CETOP 05)	TOMA DE A	1/4" G
PI0010.SB0.0014	2	NG-10 (CETOP 05)	TOMA DE B	1/4" G
PI0010.SAB.0014	2	NG-10 (CETOP 05)	TOMA DE A Y B	1/4" G



**DRAULITEK**

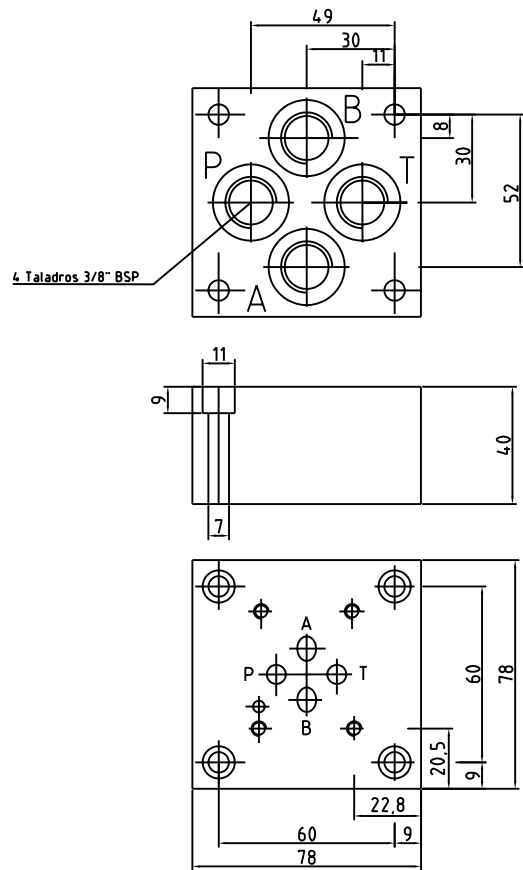
2.1.1



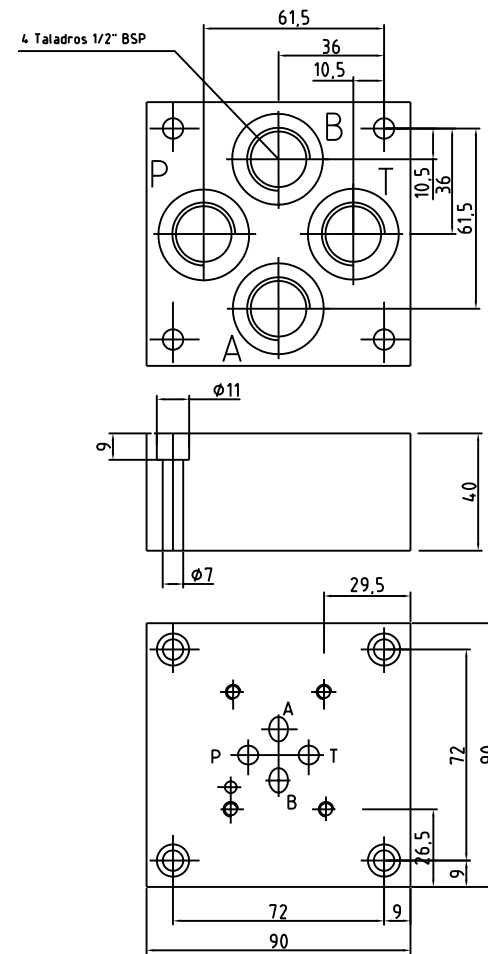
PB006038SLSV

PB006012SLSV

**DRAULITEK**



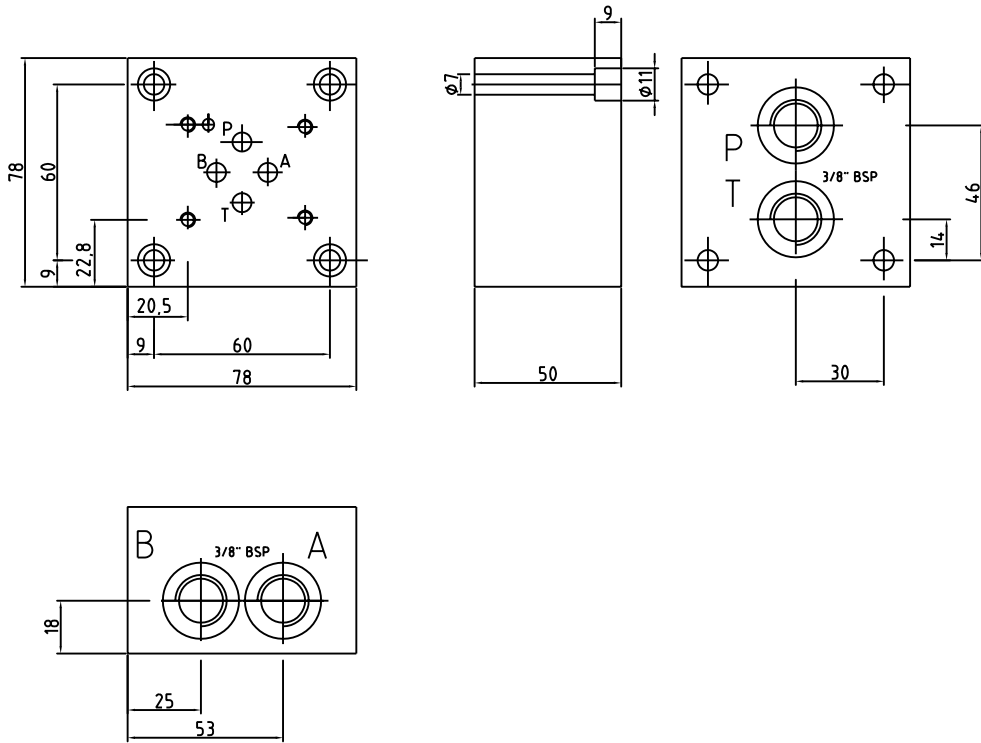
PB006038SPSV



2.1.2

PB006012SPSV

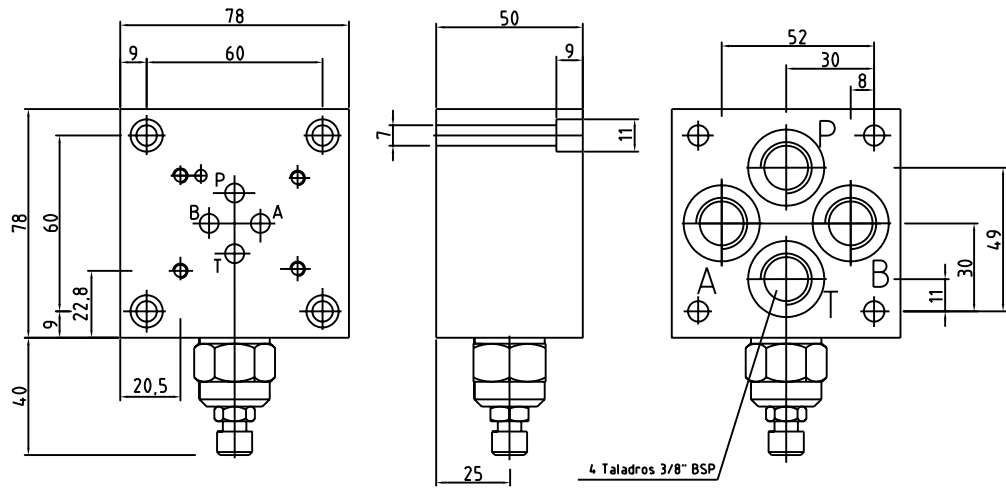
2.1.3



PB006038SMSV

PB006012SMSV

2.2.1

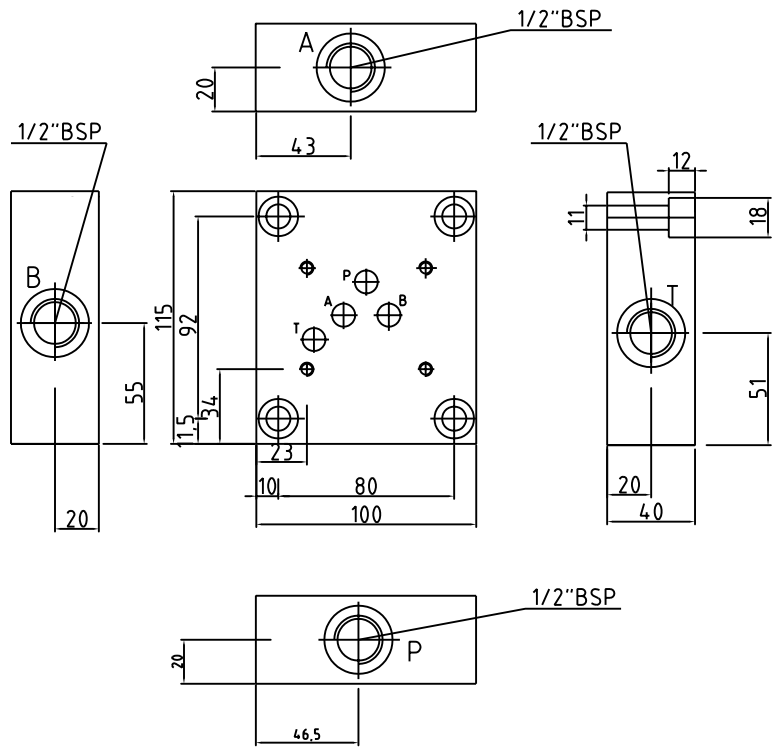


PB006038SPCV\*

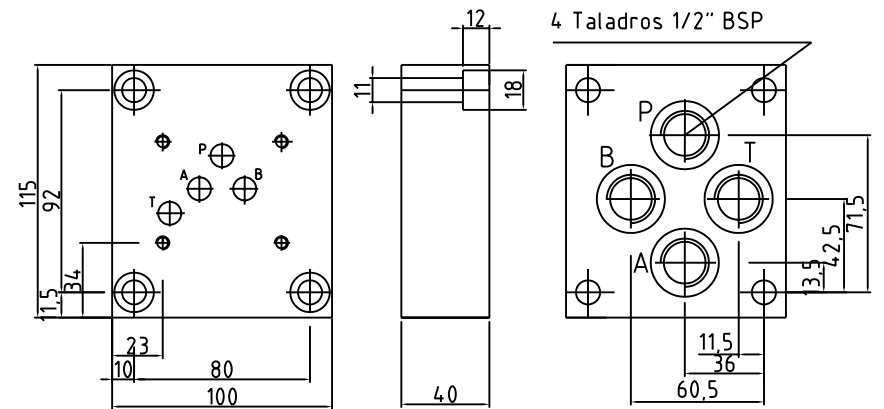
PB006012SMCV\*

**DRAULITEK**

2.3.1



PB010012SLSV

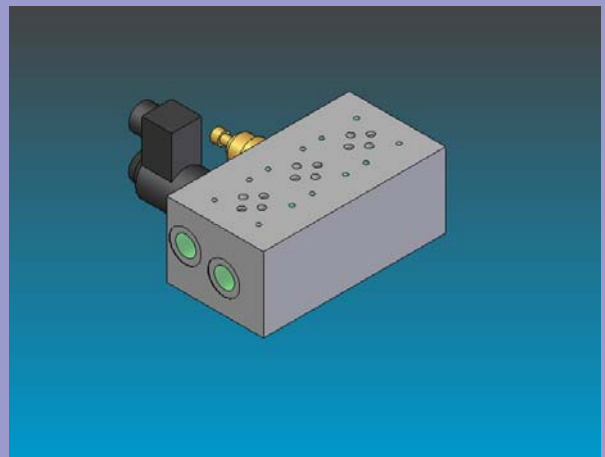
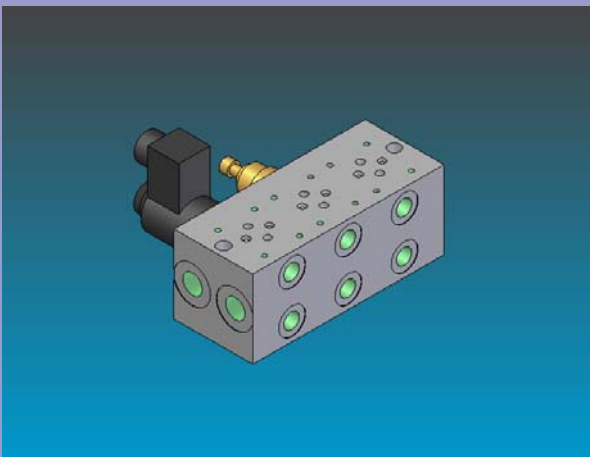
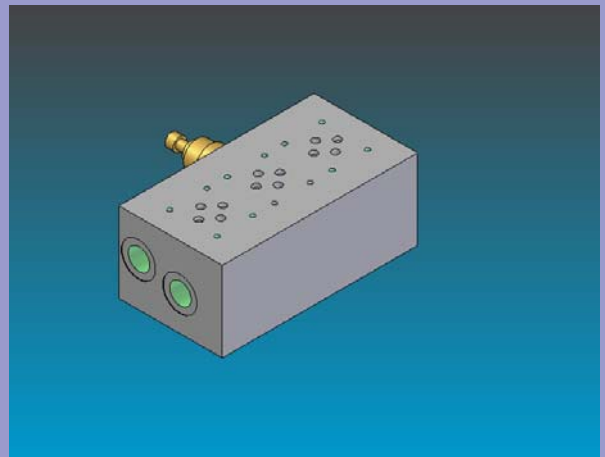
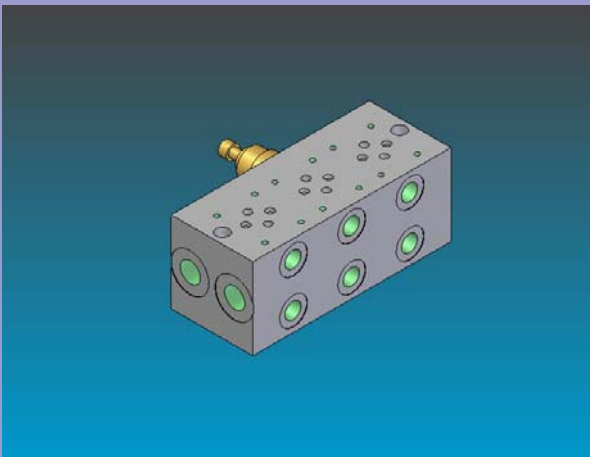
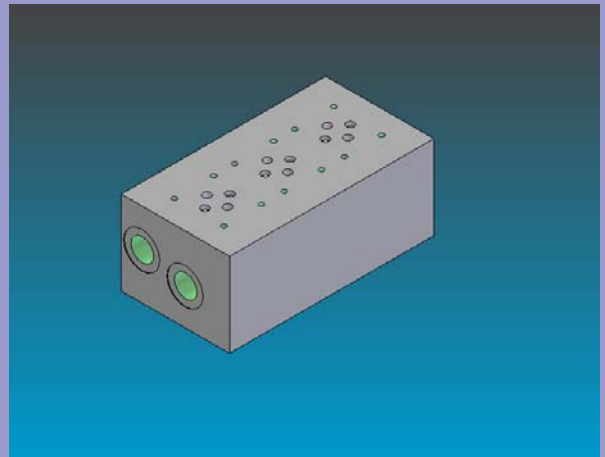
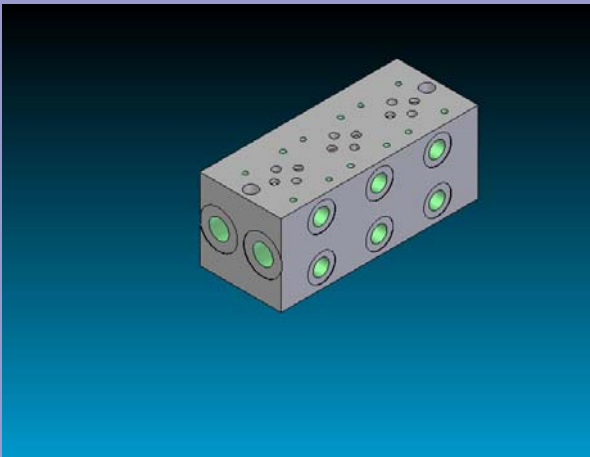


PB010012SPSV

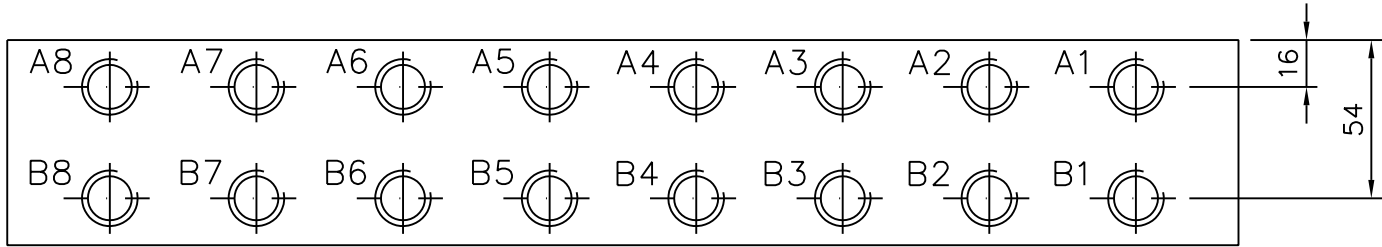
**DRAULITEK**

# ***DRAULITEK***

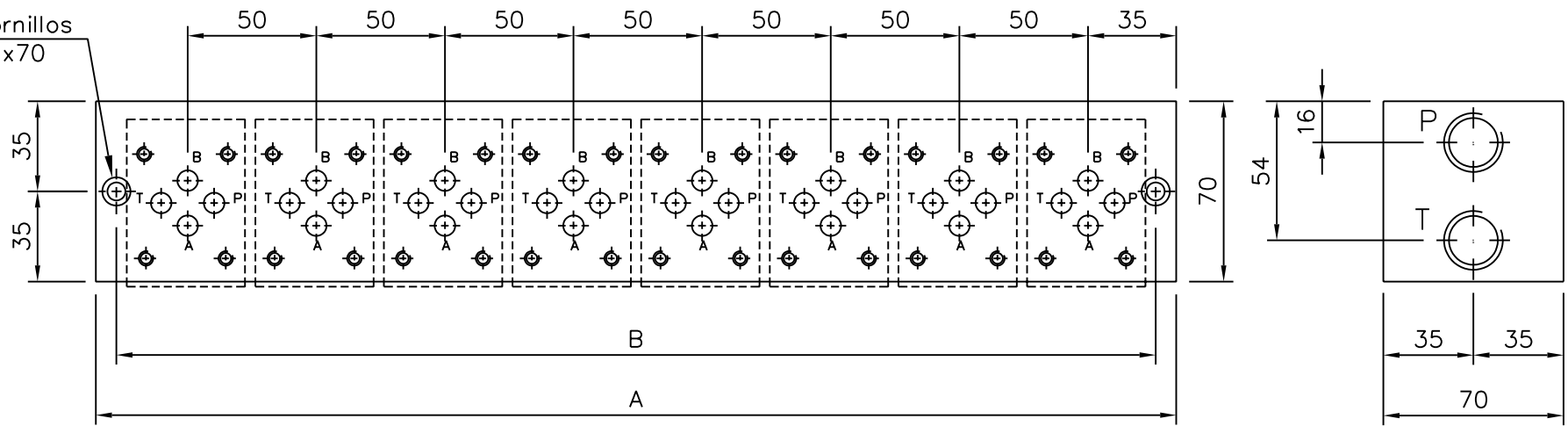
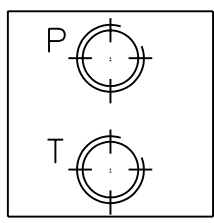
## **BLOQUES DE ESTACIONES**



3.1.1

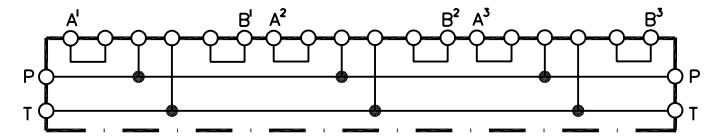


Fijacion: 2 tornillos  
DIN 912 M6x70



BLOQUE NG-6 (CETOP 3) DE 1 A 8 ESTACIONES SALIDAS LATERALES

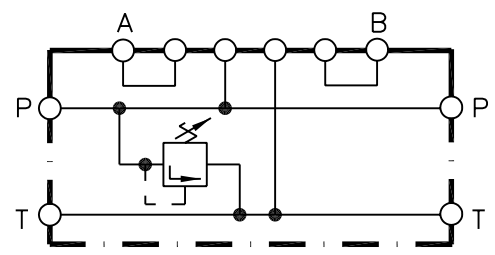
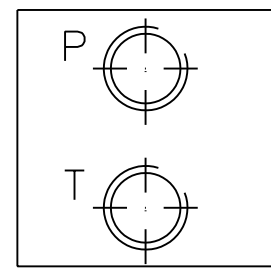
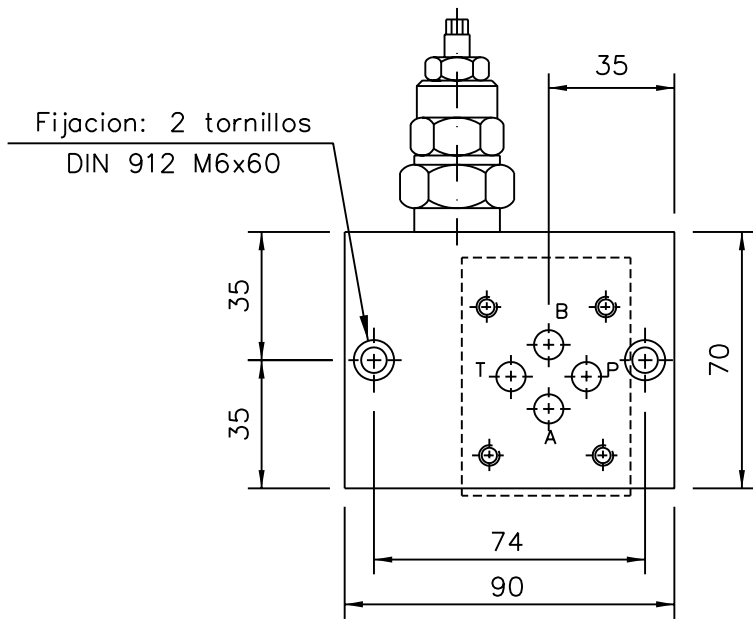
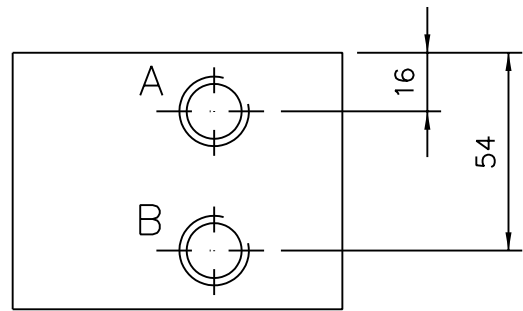
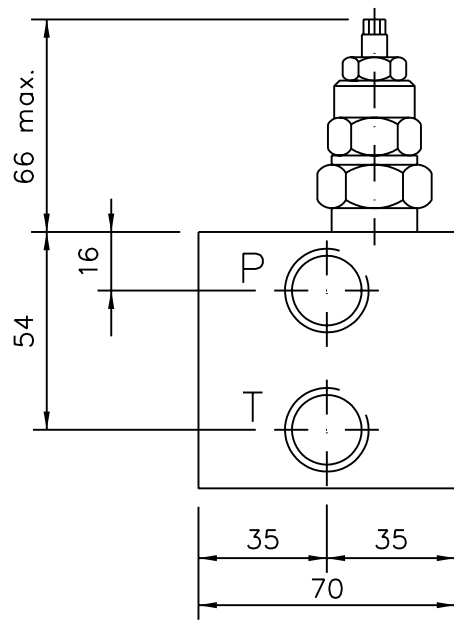
REFERENCIA	ESTACIONES	DIMENSIONES		SALIDAS			
		A	B	P	T	A	B
P06.01.038.SL.SV	1	70	54	1/2"	1/2"	3/8"	3/8"
P06.02.038.SL.SV	2	120	104	1/2"	1/2"	3/8"	3/8"
P06.03.038.SL.SV	3	170	154	1/2"	1/2"	3/8"	3/8"
P06.04.038.SL.SV	4	220	204	1/2"	1/2"	3/8"	3/8"
P06.05.038.SL.SV	5	270	254	1/2"	1/2"	3/8"	3/8"
P06.06.038.SL.SV	6	320	304	1/2"	1/2"	3/8"	3/8"
P06.07.038.SL.SV	7	370	354	1/2"	1/2"	3/8"	3/8"
P06.08.038.SL.SV	8	420	404	1/2"	1/2"	3/8"	3/8"



**DRAULITEK**



3.1.2



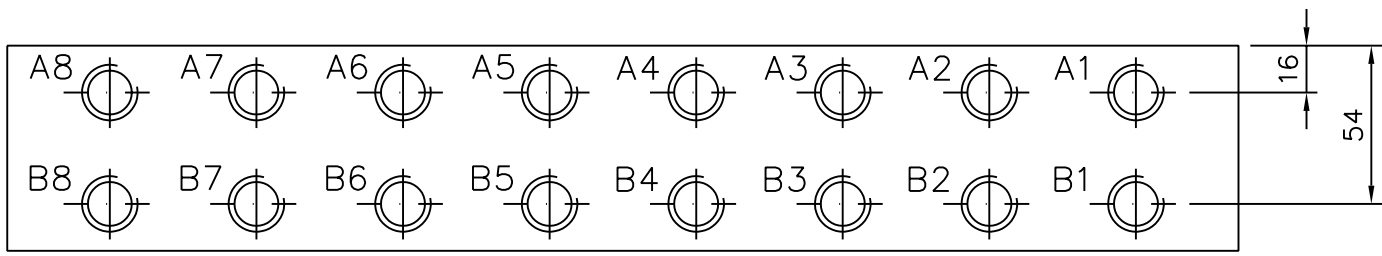
PRESION DE TRABAJO	
1	DE 5 A 140 BARS
2	DE 70 A 210 BARS
3	DE 105 A 350 BARS

NOTA: PARA OBTENER LA REFERENCIA COMPLETA, SUSTITUIR EL ASTERISCO CON LA PRESION DE TRABAJO REQUERIDA.

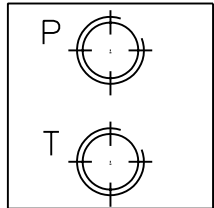
BLOQUE NG-6 (CETOP 3) DE 1 ESTACION SALIDAS LATERALES CON VALVULA DE SEGURIDAD					
REFERENCIA	ESTACIONES	SALIDAS			
		P	T	A	B
P06.01.038.SL.CV*	1	1/2"	1/2"	3/8"	3/8"

**DRAULITEK**

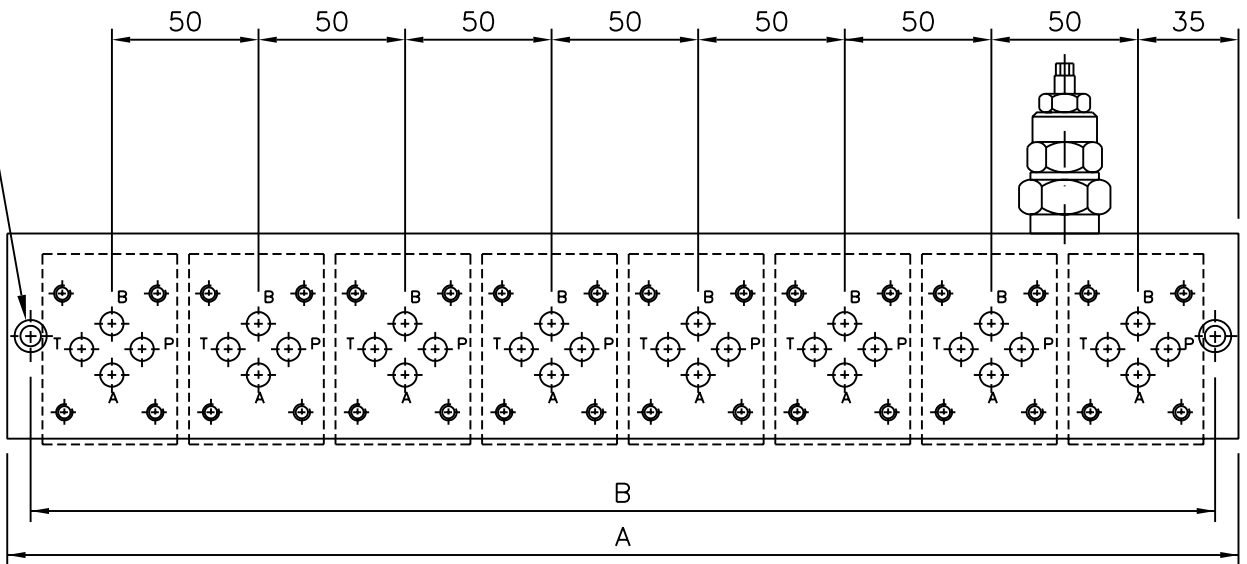
3.1.3



Fijacion: 2 tornillos  
DIN 912 M6x70

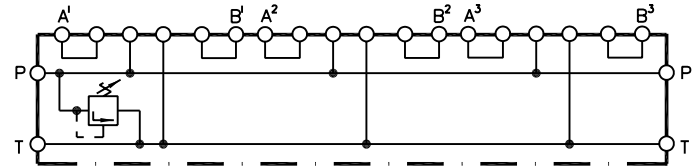


PRESION DE TRABAJO	
1	DE 5 A 140 BARS
2	DE 70 A 210 BARS
3	DE 105 A 350 BARS



BLOQUE NG-6 (CETOP 3) DE 2 A 8 ESTACIONES SALIDAS LATERALES CON VALVULA DE SEGURIDAD

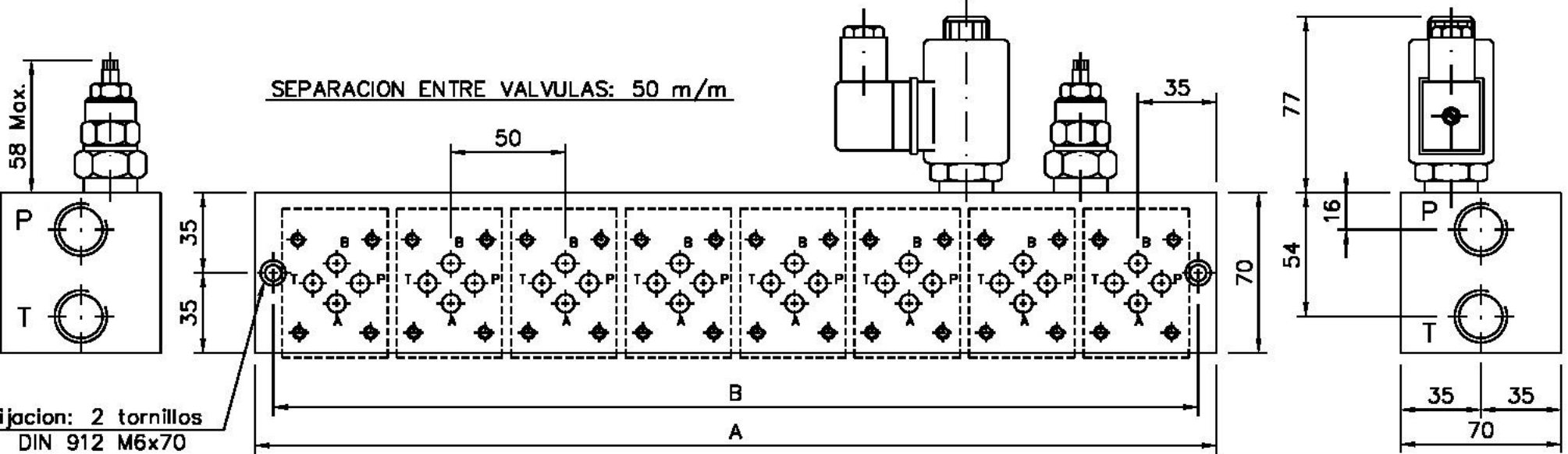
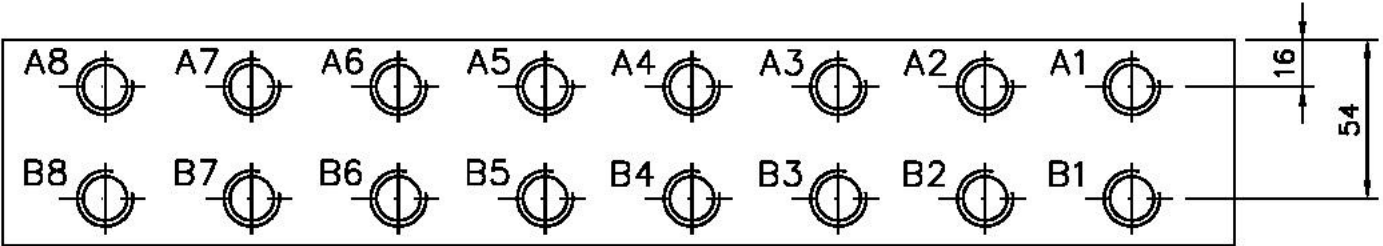
REFERENCIA	ESTACIONES	DIMENSIONES		SALIDAS			
		A	B	P	T	A	B
P06.02.038.SL.CV*	2	120	104	1/2"	1/2"	3/8"	3/8"
P06.03.038.SL.CV*	3	170	154	1/2"	1/2"	3/8"	3/8"
P06.04.038.SL.CV*	4	220	204	1/2"	1/2"	3/8"	3/8"
P06.05.038.SL.CV*	5	270	254	1/2"	1/2"	3/8"	3/8"
P06.06.038.SL.CV*	6	320	304	1/2"	1/2"	3/8"	3/8"
P06.07.038.SL.CV*	7	370	354	1/2"	1/2"	3/8"	3/8"
P06.08.038.SL.CV*	8	420	404	1/2"	1/2"	3/8"	3/8"



NOTA: PARA OBTENER LA REFERENCIA COMPLETA, SUSTITUIR EL ASTERISCO CON LA PRESION DE TRABAJO REQUERIDA.

**DRAULITEK**

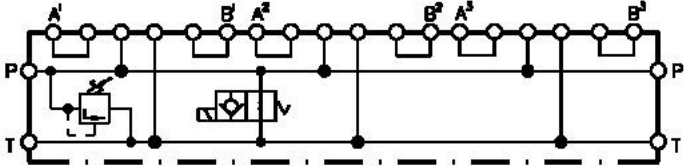
3.1.4 V2



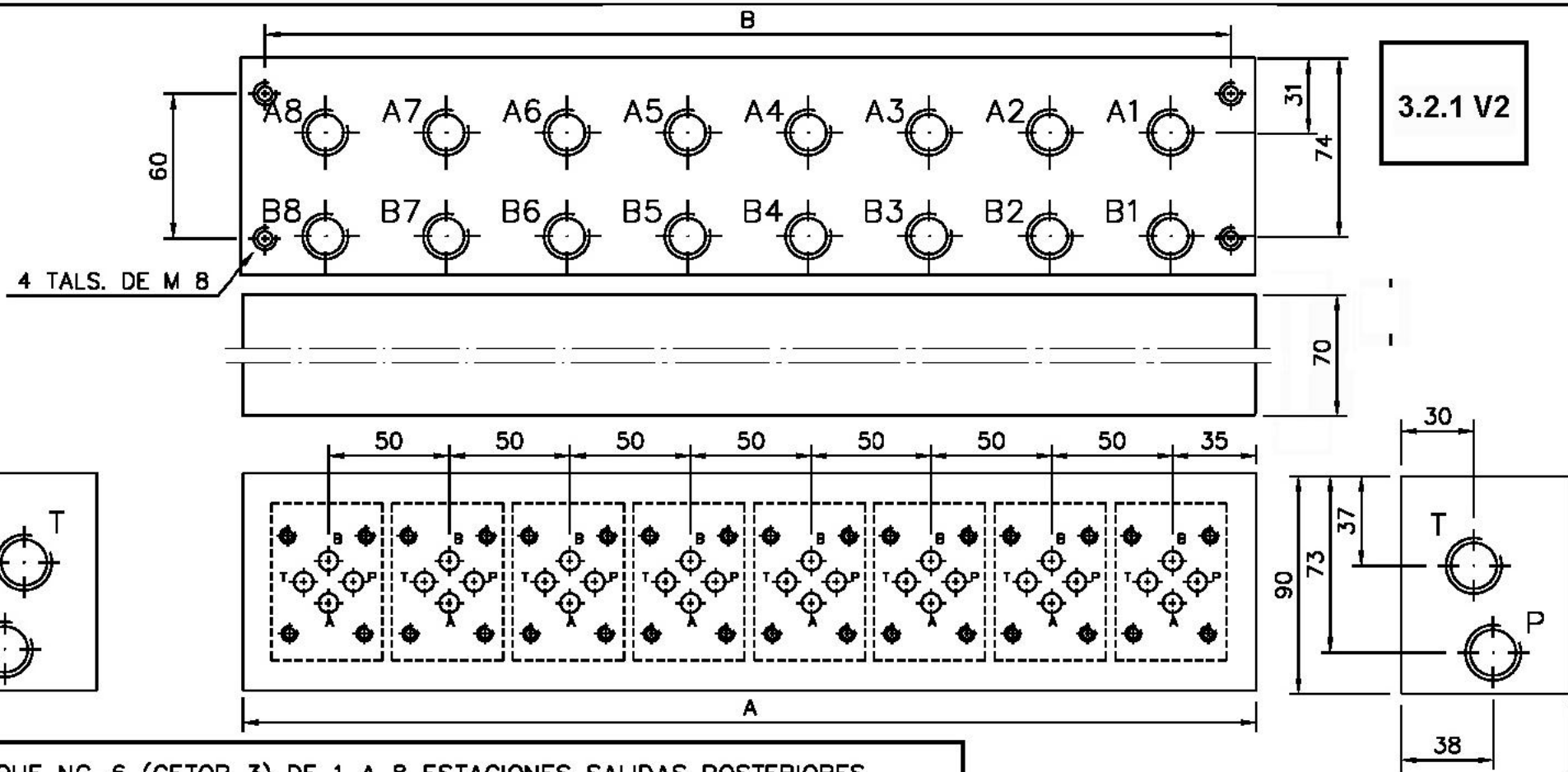
Fijacion: 2 tornillos  
DIN 912 M6x70

**BLOQUE NG-6 (CETOP 3) DE 2 A 10 ESTACIONES SALIDAS LATERALES CON VALVULA DE SEGURIDAD Y VALVULA DE VENTING**

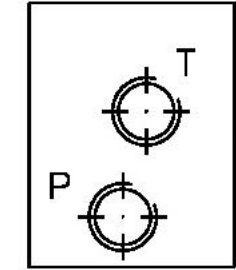
REFERENCIA	ESTACIONES	DIMENSIONES		SALIDAS			
		A	B	P	T	A	B
P06.2L.V1V.024.00	2	170	154	1/2"	1/2"	3/8"	3/8"
P06.3L.V1V.024.00	3	170	154	1/2"	1/2"	3/8"	3/8"
P06.4L.V1V.024.00	4	220	204	1/2"	1/2"	3/8"	3/8"
P06.5L.V1V.024.00	5	270	254	1/2"	1/2"	3/8"	3/8"
P06.6L.V1V.024.00	6	320	304	1/2"	1/2"	3/8"	3/8"
P06.7L.V1V.024.00	7	370	354	1/2"	1/2"	3/8"	3/8"
P06.8L.V1V.024.00	8	420	404	1/2"	1/2"	3/8"	3/8"



**DRAULITEK**

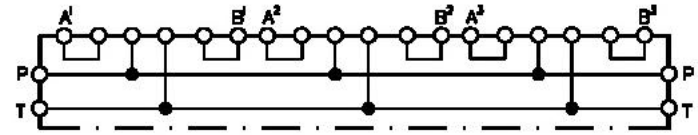


3.2.1 V2



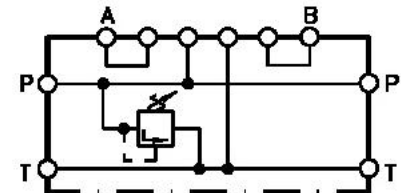
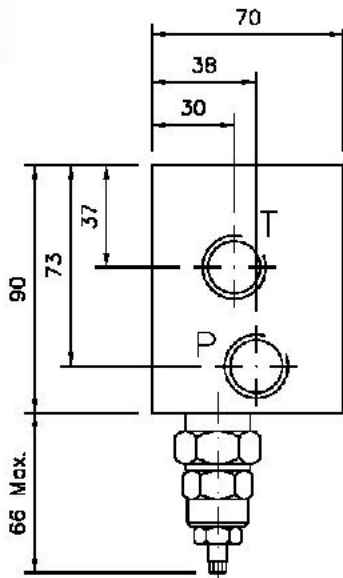
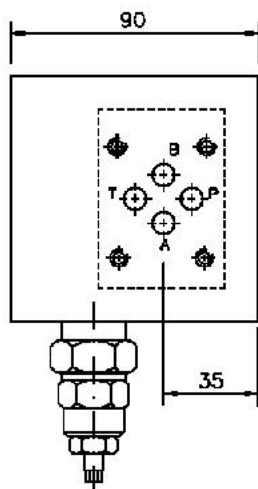
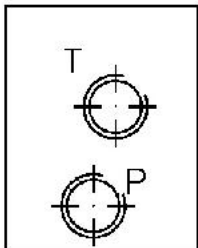
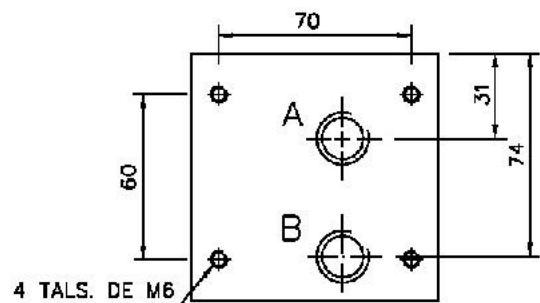
**BLOQUE NG-6 (CETOP 3) DE 1 A 8 ESTACIONES SALIDAS POSTERIORES**

REFERENCIA	ESTACIONES	DIMENSIONES		SALIDAS			
		A	B	P	T	A	B
P06.01.038.SP.SV	1	70	50	1/2"	1/2"	3/8"	3/8"
P06.02.038.SP.SV	2	120	100	1/2"	1/2"	3/8"	3/8"
P06.03.038.SP.SV	3	170	150	1/2"	1/2"	3/8"	3/8"
P06.04.038.SP.SV	4	220	200	1/2"	1/2"	3/8"	3/8"
P06.05.038.SP.SV	5	270	250	1/2"	1/2"	3/8"	3/8"
P06.06.038.SP.SV	6	320	300	1/2"	1/2"	3/8"	3/8"
P06.07.038.SP.SV	7	370	350	1/2"	1/2"	3/8"	3/8"
P06.08.038.SP.SV	8	420	400	1/2"	1/2"	3/8"	3/8"



**DRAULITEK**

3.2.2 V2



PRESION DE TRABAJO	
1	DE 5 A 140 BARS
2	DE 70 A 210 BARS
3	DE 105 A 350 BARS

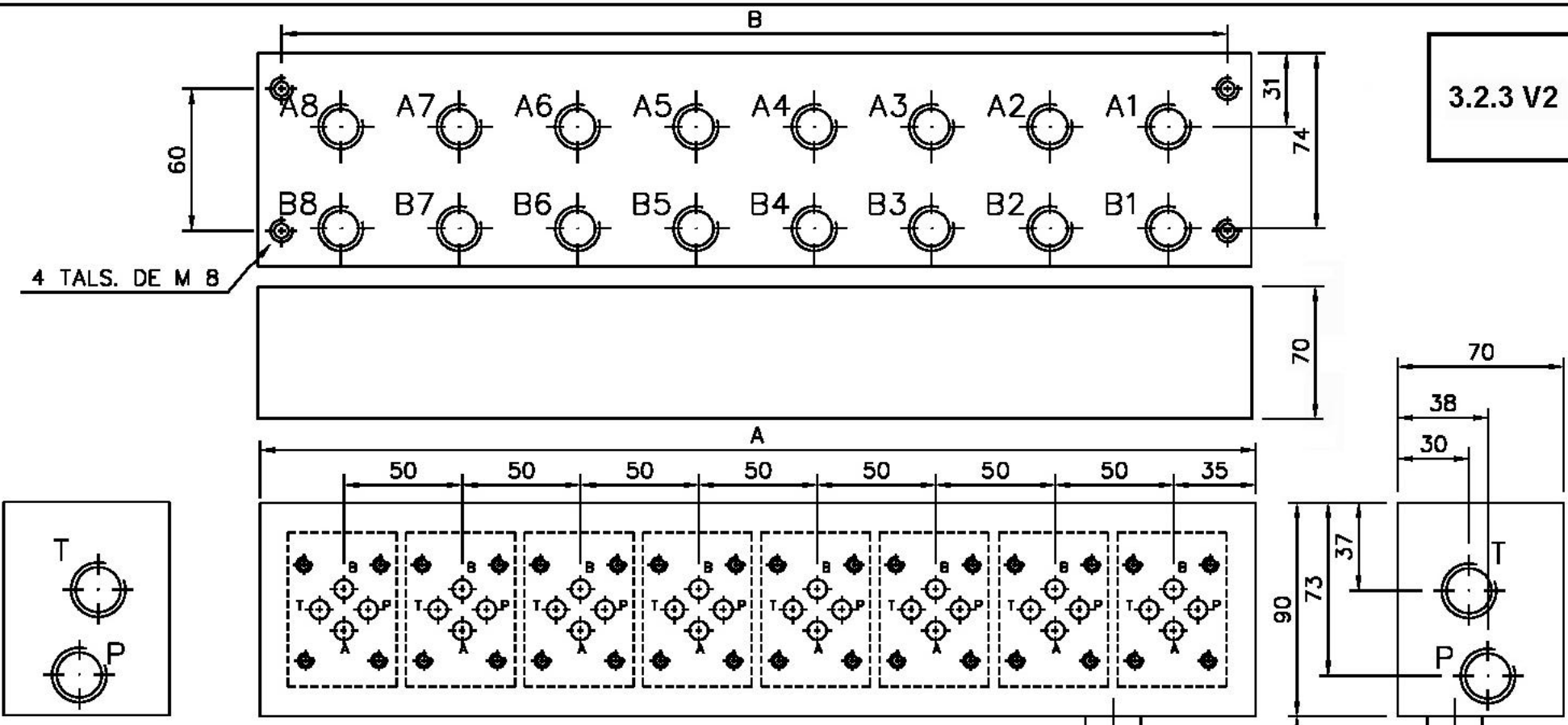
BLOQUE NG-6 (CETOP 3) DE 1 ESTACION SALIDAS POSTERIORES CON VALVULA DE SEGURIDAD

REFERENCIA	ESTACIONES	SALIDAS			
		P	T	A	B
P06.01.038.SP.CV*	1	1/2"	1/2"	3/8"	3/8"

NOTA: PARA OBTENER LA REFERENCIA COMPLETA, SUSTITUIR EL ASTERISCO CON LA PRESION DE TRABAJO REQUERIDA.

**DRAULITEK**

3.2.3 V2



NOTA: PARA OBTENER LA REFERENCIA COMPLETA, SUSTITUIR EL ASTERISCO CON LA PRESION DE TRABAJO REQUERIDA.

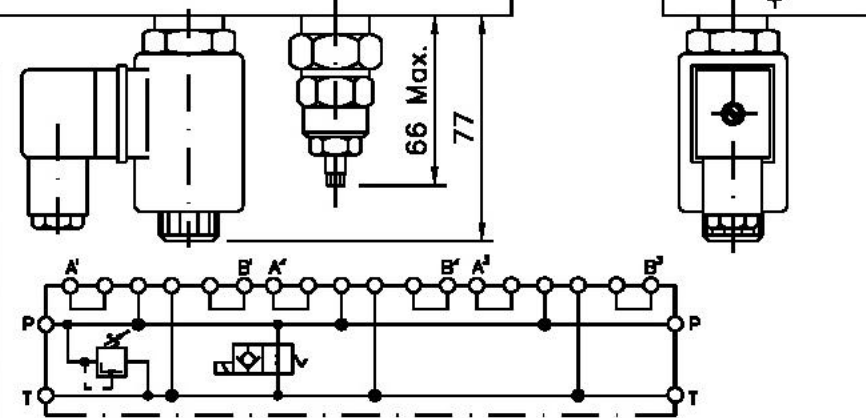
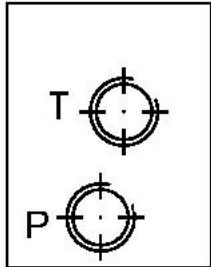
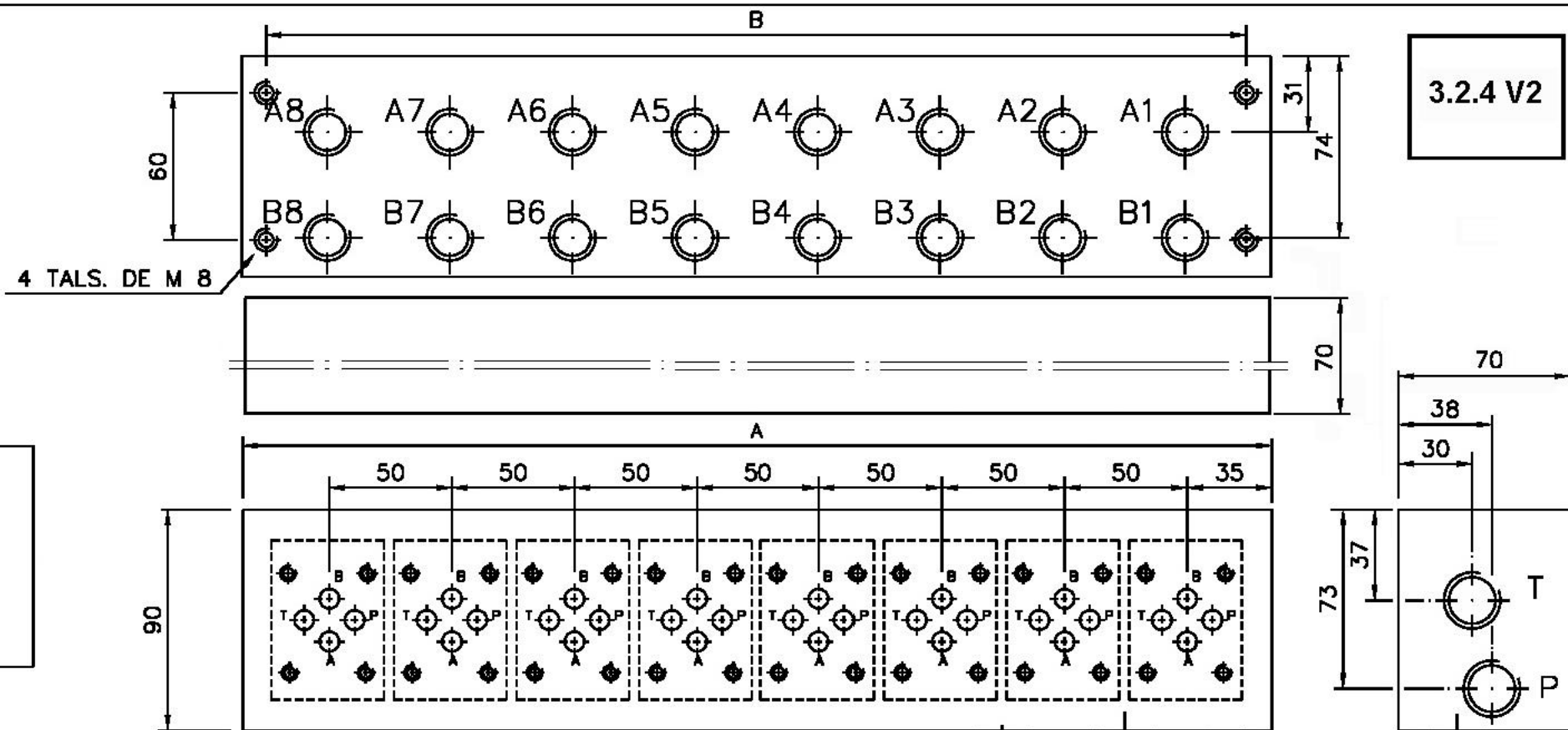
**BLOQUE NG-6 (CETOP 3) DE 2 A 8 ESTACIONES SALIDAS POSTERIORES CON VALVULA DE SEGURIDAD**

REFERENCIA	ESTACIONES	DIMENSIONES		SALIDAS			
		A	B	P	T	A	B
P06.02.038.SP.CV*	2	120	100	1/2"	1/2"	3/8"	3/8"
P06.03.038.SP.CV*	3	170	150	1/2"	1/2"	3/8"	3/8"
P06.04.038.SP.CV*	4	220	200	1/2"	1/2"	3/8"	3/8"
P06.05.038.SP.CV*	5	270	250	1/2"	1/2"	3/8"	3/8"
P06.06.038.SP.CV*	6	320	300	1/2"	1/2"	3/8"	3/8"
P06.07.038.SP.CV*	7	370	350	1/2"	1/2"	3/8"	3/8"
P06.08.038.SP.CV*	8	420	400	1/2"	1/2"	3/8"	3/8"

**PRESION DE TRABAJO**

1	DE 5 A 140 BARS
2	DE 70 A 210 BARS
3	DE 105 A 350 BARS

**DRAULITEK**

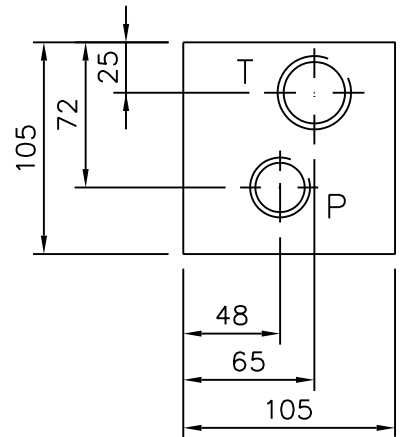
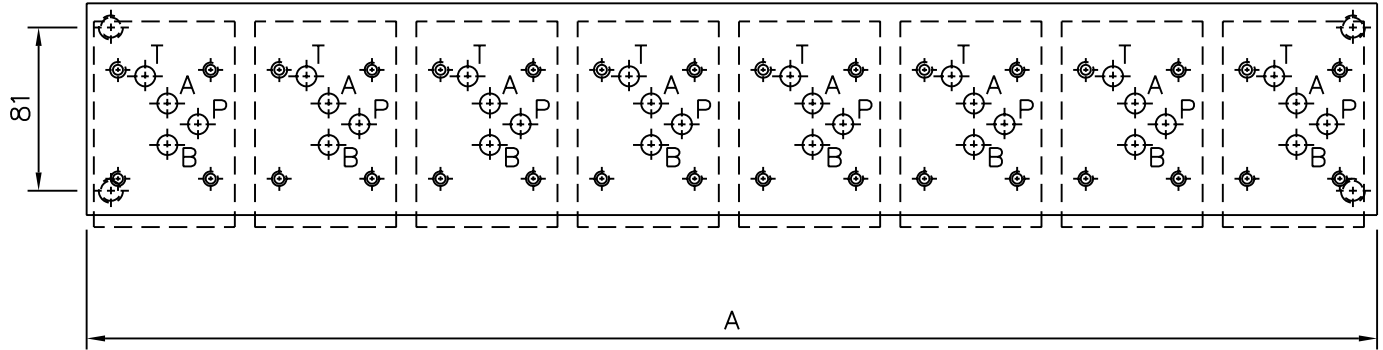
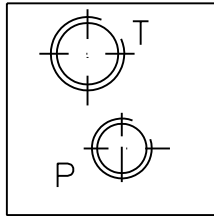
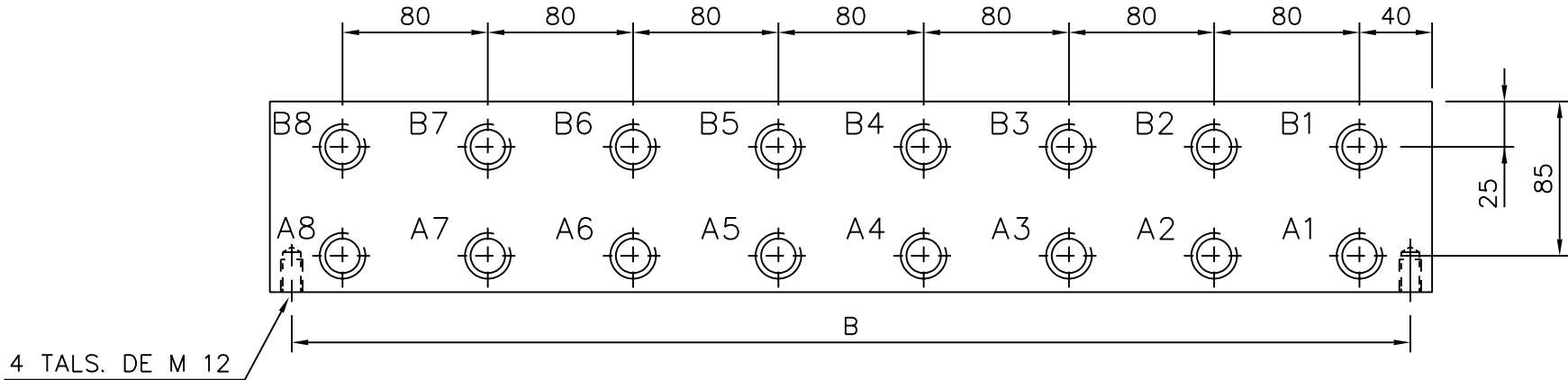


**BLOQUE NG-6 (CETOP 3) DE 3 A 8 ESTACIONES SALIDAS POSTERIORES, CON VALVULA DE SEGURIDAD Y VALVULA DE VENTING**

REFERENCIA	ESTACIONES	DIMENSIONES		SALIDAS			
		A	B	P	T	A	B
P06.2P.V1V.024.00	2	170	150	1/2"	1/2"	3/8"	3/8"
P06.3P.V1V.024.00	3	170	150	1/2"	1/2"	3/8"	3/8"
P06.4P.V1V.024.00	4	220	200	1/2"	1/2"	3/8"	3/8"
P06.5P.V1V.024.00	5	270	250	1/2"	1/2"	3/8"	3/8"
P06.6P.V1V.024.00	6	320	300	1/2"	1/2"	3/8"	3/8"
P06.7P.V1V.024.00	7	370	350	1/2"	1/2"	3/8"	3/8"
P06.8P.V1V.024.00	8	420	400	1/2"	1/2"	3/8"	3/8"

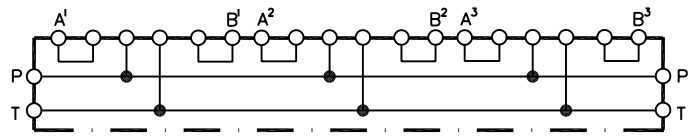
**DRAULITEK**

4.1.1



BLOQUE NG-10 (CETOP 5) DE 1 A 8 ESTACIONES SALIDAS LATERALES

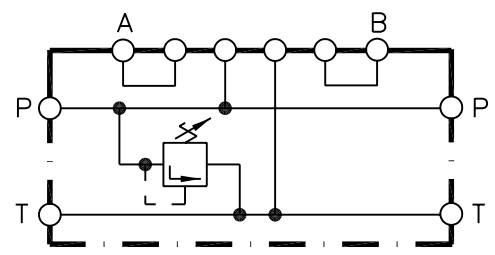
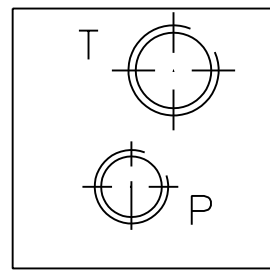
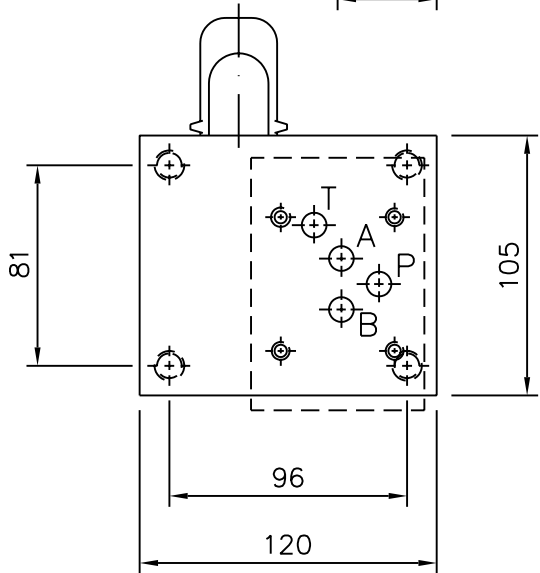
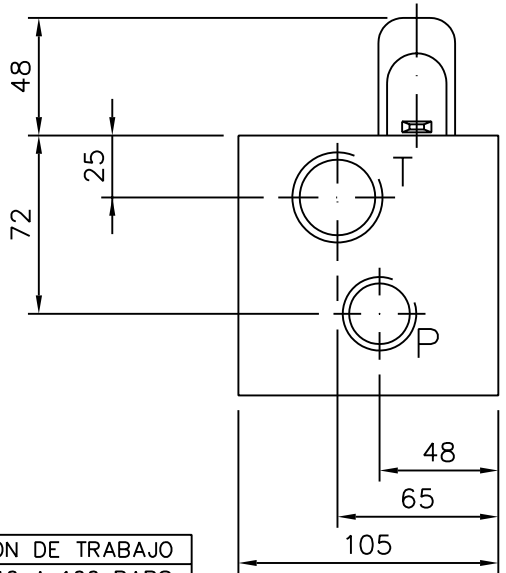
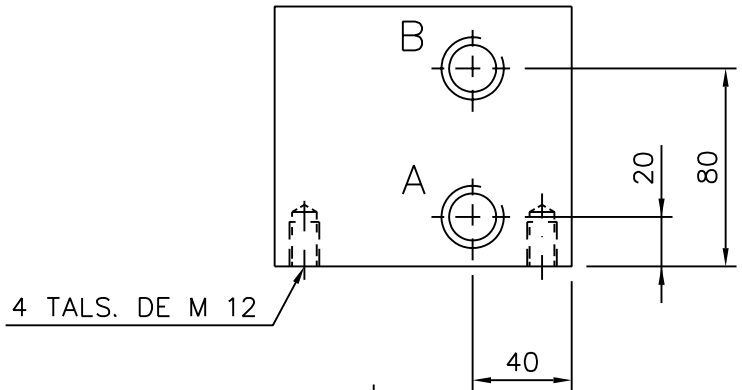
REFERENCIA	ESTACIONES	DIMENSIONES		SALIDAS			
		A	B	P	T	A	B
P10.01.012.SL.SV	1	80	56	3/4"	1"	1/2"	1/2"
P10.02.012.SL.SV	2	160	136	3/4"	1"	1/2"	1/2"
P10.03.012.SL.SV	3	240	216	3/4"	1"	1/2"	1/2"
P10.04.012.SL.SV	4	320	296	3/4"	1"	1/2"	1/2"
P10.05.012.SL.SV	5	400	376	3/4"	1"	1/2"	1/2"
P10.06.012.SL.SV	6	480	456	3/4"	1"	1/2"	1/2"
P10.07.012.SL.SV	7	560	536	3/4"	1"	1/2"	1/2"
P10.08.012.SL.SV	8	640	616	3/4"	1"	1/2"	1/2"



**DRAULITEK**



4.1.2



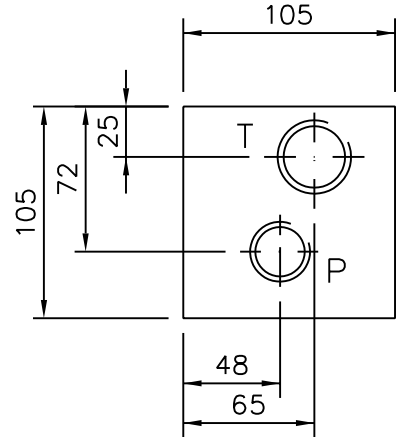
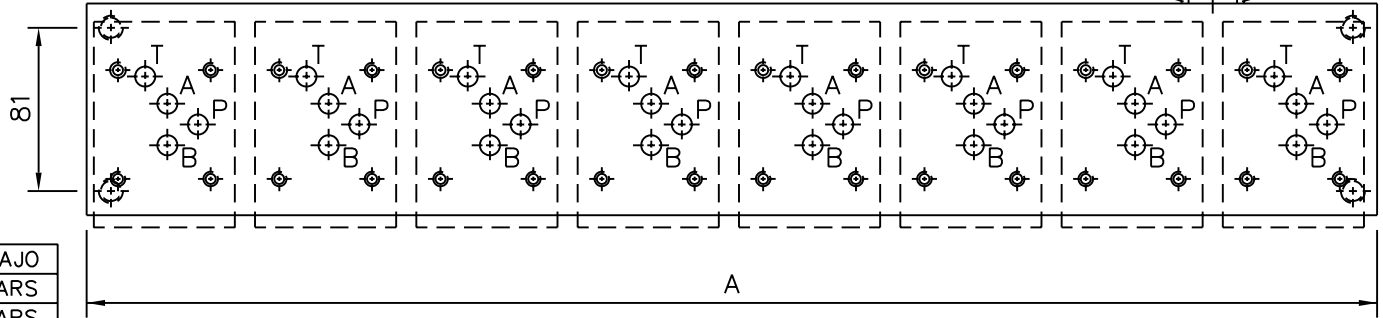
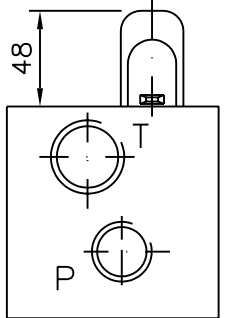
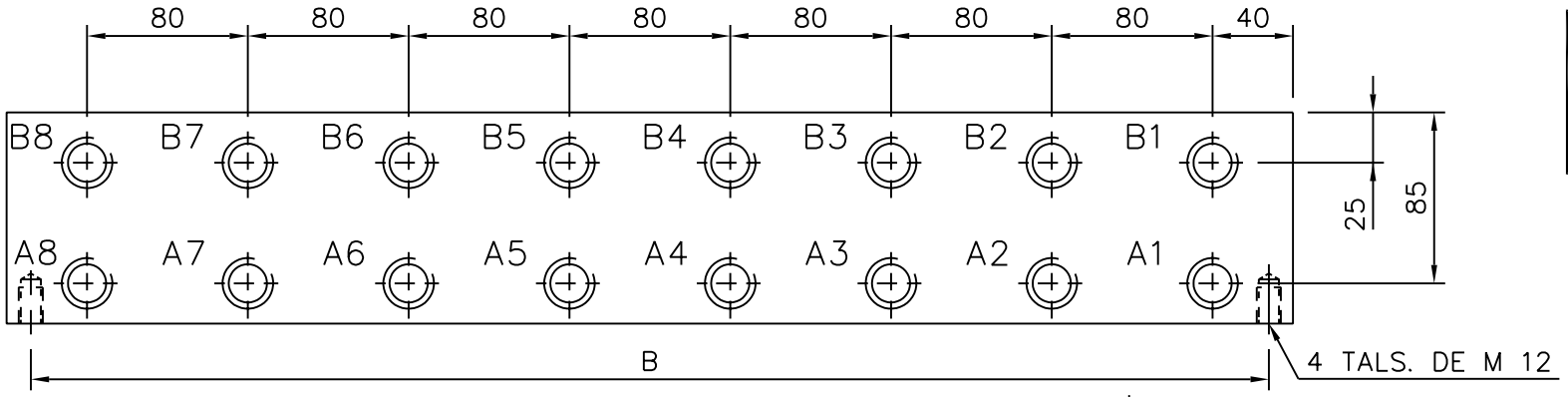
PRESION DE TRABAJO	
1	DE 40 A 100 BARS
2	DE 70 A 180 BARS
3	DE 100 A 320 BARS

BLOQUE NG-10 (CETOP 5) DE 1 ESTACION SALIDAS LATERALES CON VALVULA DE SEGURIDAD					
REFERENCIA	ESTACIONES	SALIDAS			
		P	T	A	B
P10.01.012.SL.CV*	1	3/4"	1"	1/2"	1/2"

NOTA: PARA OBTENER LA REFERENCIA COMPLETA, SUSTITUIR EL ASTERISCO CON LA PRESION DE TRABAJO REQUERIDA.

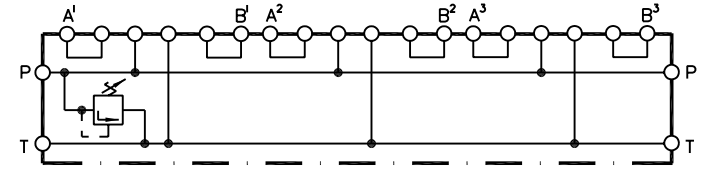
**DRAULITEK**

4.1.3



PRESION DE TRABAJO	
1	DE 40 A 100 BARS
2	DE 70 A 180 BARS
3	DE 100 A 320 BARS

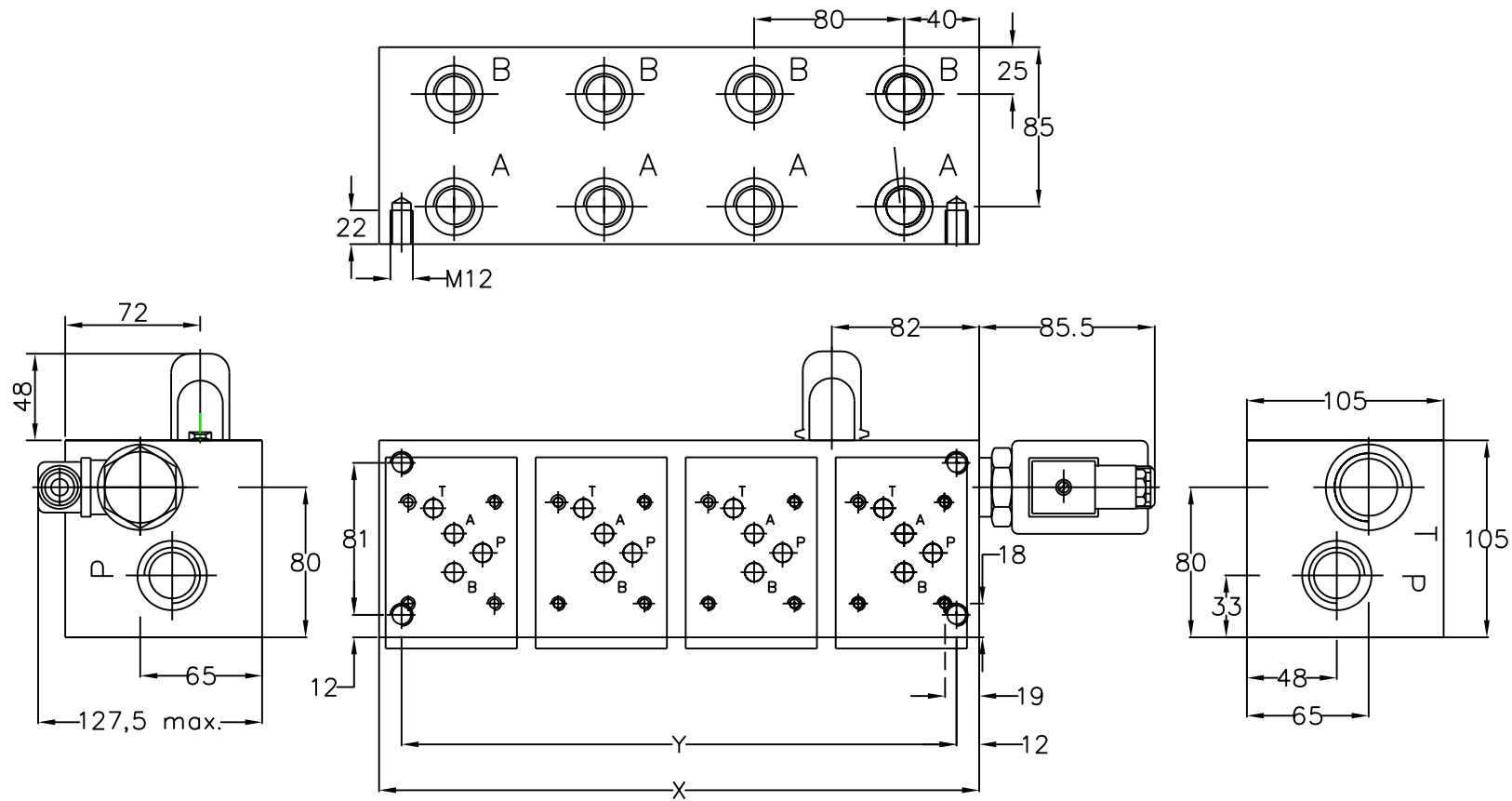
BLOQUE NG-10 (CETOP 5) DE 2 A 8 ESTACIONES SALIDAS LATERALES CON VALVULA DE SEGURIDAD							
REFERENCIA	ESTACIONES	DIMENSIONES		SALIDAS			
		A	B	P	T	A	B
P10.02.012.SL.CV*	2	160	136	3/4"	1"	1/2"	1/2"
P10.03.012.SL.CV*	3	240	216	3/4"	1"	1/2"	1/2"
P10.04.012.SL.CV*	4	320	296	3/4"	1"	1/2"	1/2"
P10.05.012.SL.CV*	5	400	376	3/4"	1"	1/2"	1/2"
P10.06.012.SL.CV*	6	480	456	3/4"	1"	1/2"	1/2"
P10.07.012.SL.CV*	7	560	536	3/4"	1"	1/2"	1/2"
P10.08.012.SL.CV*	8	640	616	3/4"	1"	1/2"	1/2"



NOTA: PARA OBTENER LA REFERENCIA COMPLETA, SUSTITUIR EL ASTERISCO CON LA PRESION DE TRABAJO REQUERIDA.

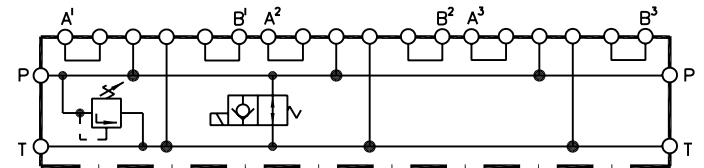
**DRAULITEK**

4.1.4

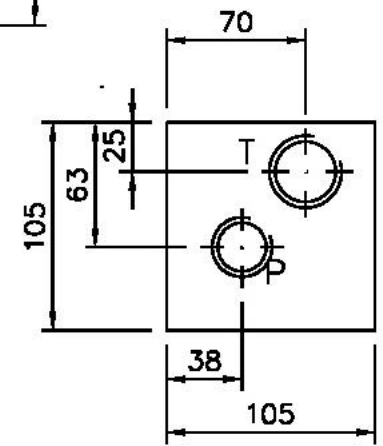
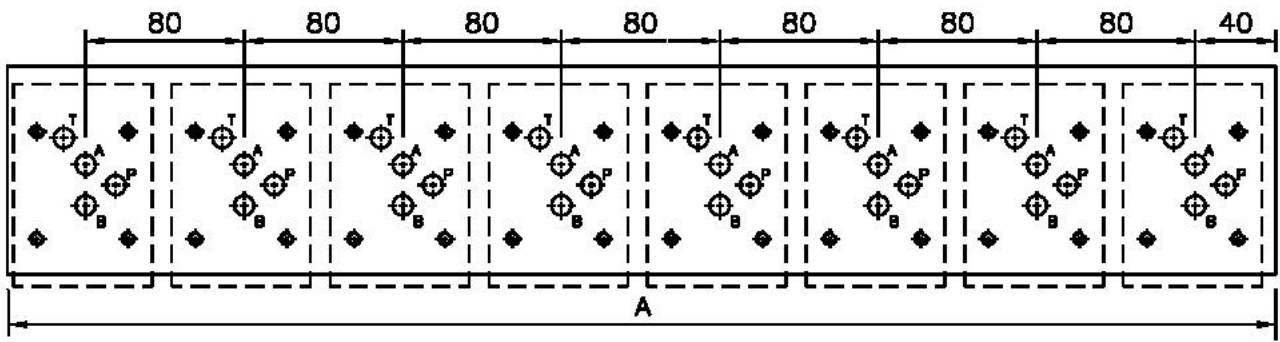
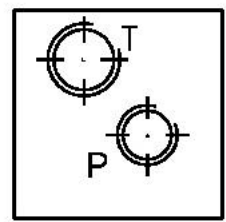
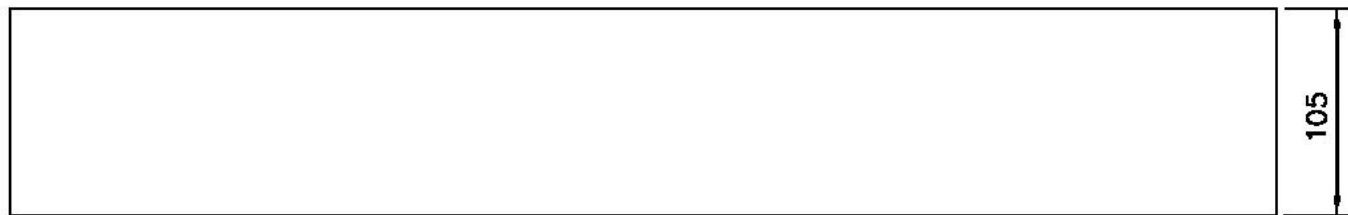
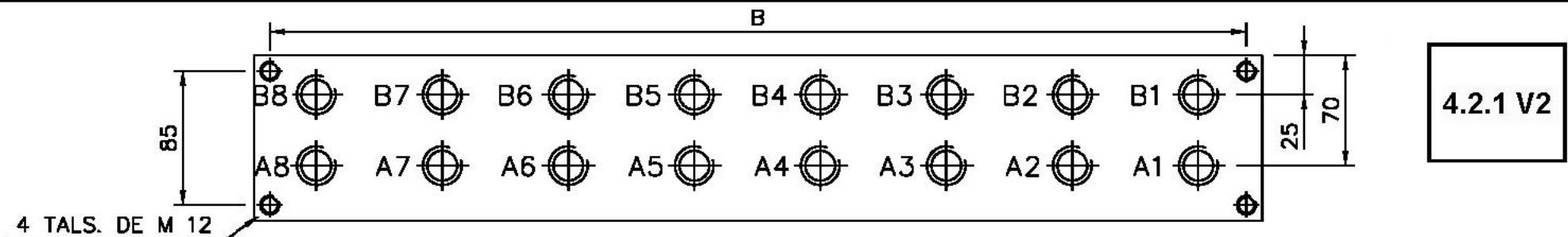


BLOQUE NG-10 (CETOP 5) DE 2 A 10 ESTACIONES SALIDAS LATERALES CON VALVULA DE SEGURIDAD Y VALVULA DE VENTING

REFERENCIA	ESTACIONES	DIMENSIONES		SALIDAS			
		A	B	P	T	A	B
P10.2L.V1V.024.00	2	240	216	3/4"	1"	1/2"	1/2"
P10.3L.V1V.024.00	3	240	216	3/4"	1"	1/2"	1/2"
P10.4L.V1V.024.00	4	320	296	3/4"	1"	1/2"	1/2"
P10.5L.V1V.024.00	5	400	376	3/4"	1"	1/2"	1/2"
P10.6L.V1V.024.00	6	480	456	3/4"	1"	1/2"	1/2"
P10.7L.V1V.024.00	7	560	536	3/4"	1"	1/2"	1/2"
P10.8L.V1V.024.00	8	640	616	3/4"	1"	1/2"	1/2"

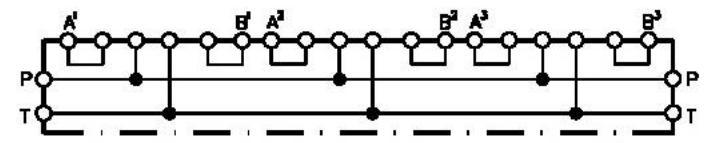


**DRAULITEK**



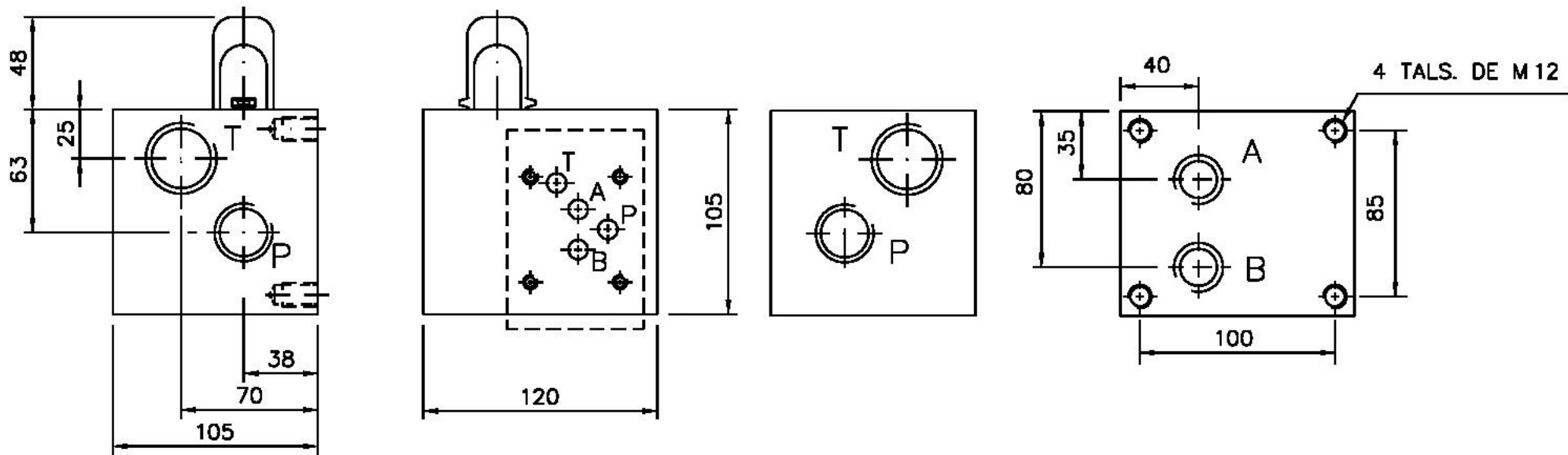
**BLOQUE NG-10 (CETOP 5) DE 1 A 8 ESTACIONES SALIDAS POSTERIORES**

REFERENCIA	ESTACIONES	DIMENSIONES		SALIDAS			
		A	B	P	T	A	B
P10.01.012.SP.SV	1	80	60	3/4"	1"	1/2"	1/2"
P10.02.012.SP.SV	2	160	140	3/4"	1"	1/2"	1/2"
P10.03.012.SP.SV	3	240	220	3/4"	1"	1/2"	1/2"
P10.04.012.SP.SV	4	320	300	3/4"	1"	1/2"	1/2"
P10.05.012.SP.SV	5	400	380	3/4"	1"	1/2"	1/2"
P10.06.012.SP.SV	6	480	460	3/4"	1"	1/2"	1/2"
P10.07.012.SP.SV	7	560	540	3/4"	1"	1/2"	1/2"
P10.08.012.SP.SV	8	640	620	3/4"	1"	1/2"	1/2"



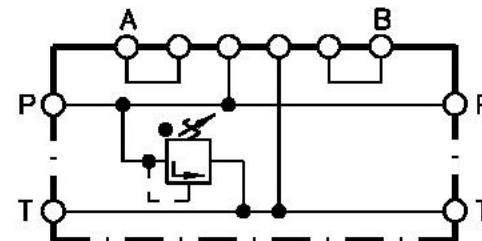
**DRAULITEK**

4.2.2 V2

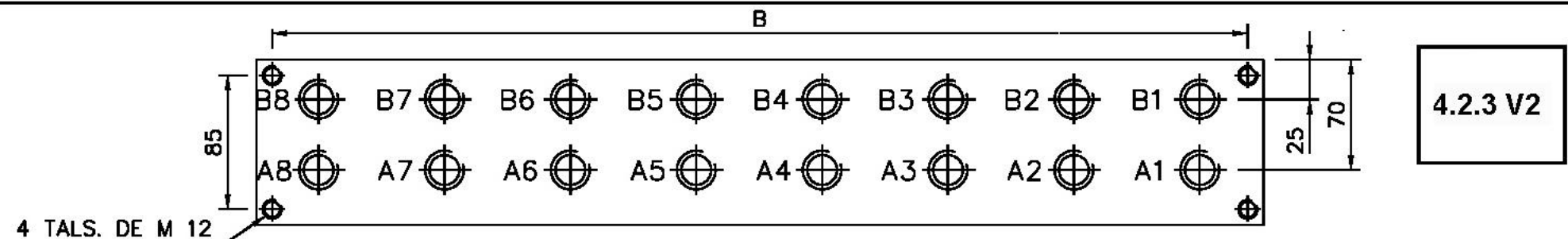


PRESION DE TRABAJO	
1	DE 40 A 100 BARS
2	DE 70 A 180 BARS
3	DE 100 A 320 BARS

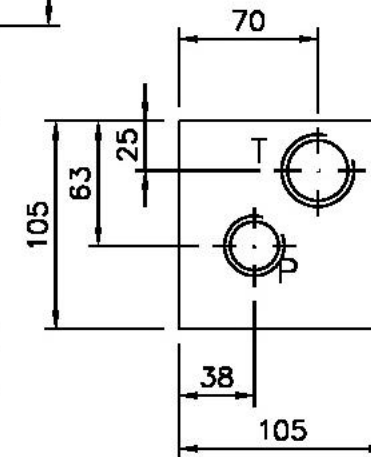
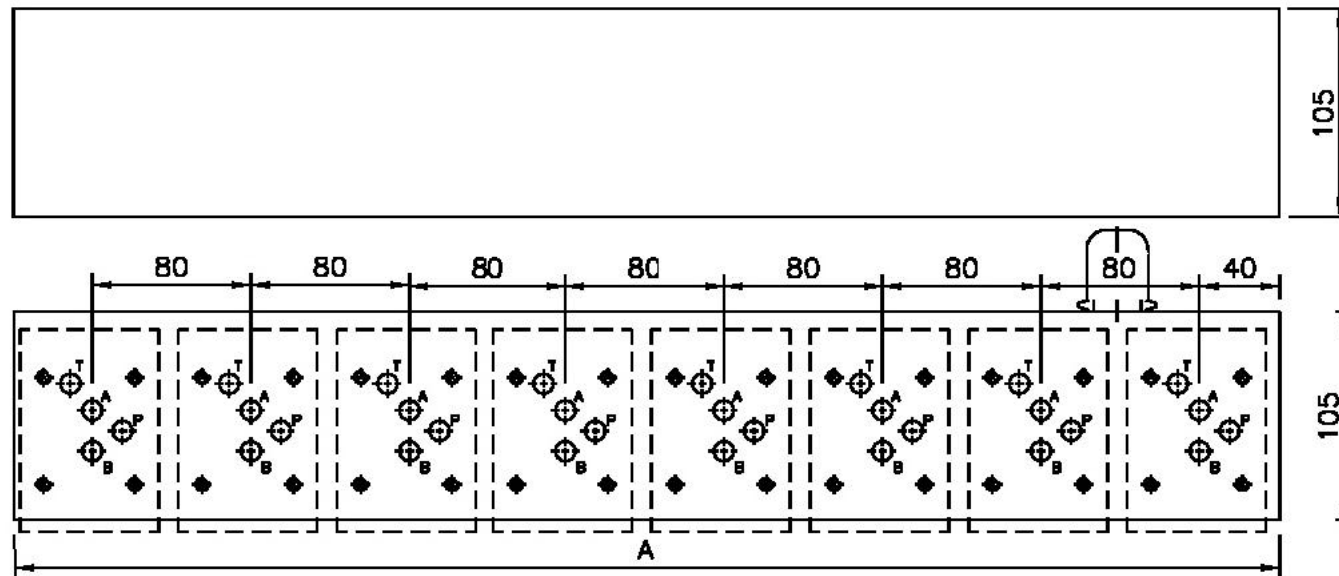
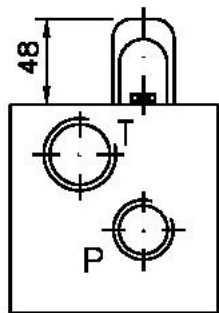
BLOQUE NG-10 (CETOP 5) DE 1 ESTACION SALIDAS POSTERIORES CON VALVULA DE SEGURIDAD					
REFERENCIA	ESTACIONES	SALIDAS			
		P	T	A	B
P10.01.012.SP.C*	1	3/4"	1"	1/2"	1/2"



NOTA: PARA OBTENER LA REFERENCIA COMPLETA, SUSTITUIR EL ASTERISCO CON LA PRESION DE TRABAJO REQUERIDA.

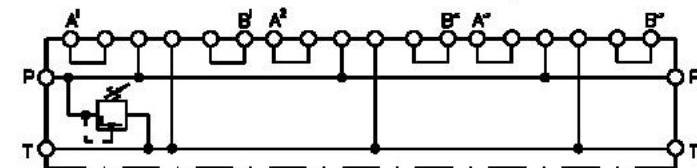


4.2.3 V2



BLOQUE NG-10 (CETOP 5) DE 2 A 8 ESTACIONES SALIDAS POSTERIORES CON VALVULA DE SEGURIDAD

REFERENCIA	ESTACIONES	DIMENSIONES		SALIDAS			
		A	B	P	T	A	B
P10.02.012.SP.CV*	2	160	140	3/4"	1"	1/2"	1/2"
P10.03.012.SP.CV*	3	240	220	3/4"	1"	1/2"	1/2"
P10.04.012.SP.CV*	4	320	300	3/4"	1"	1/2"	1/2"
P10.05.012.SP.CV*	5	400	380	3/4"	1"	1/2"	1/2"
P10.06.012.SP.CV*	6	480	460	3/4"	1"	1/2"	1/2"
P10.07.012.SP.CV*	7	560	540	3/4"	1"	1/2"	1/2"
P10.08.012.SP.CV*	8	640	620	3/4"	1"	1/2"	1/2"

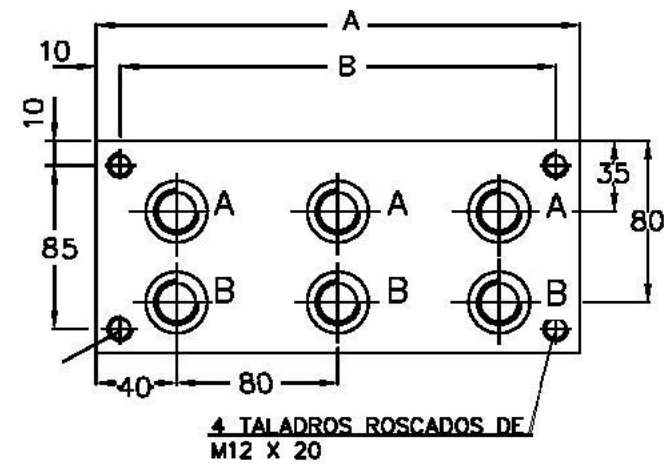
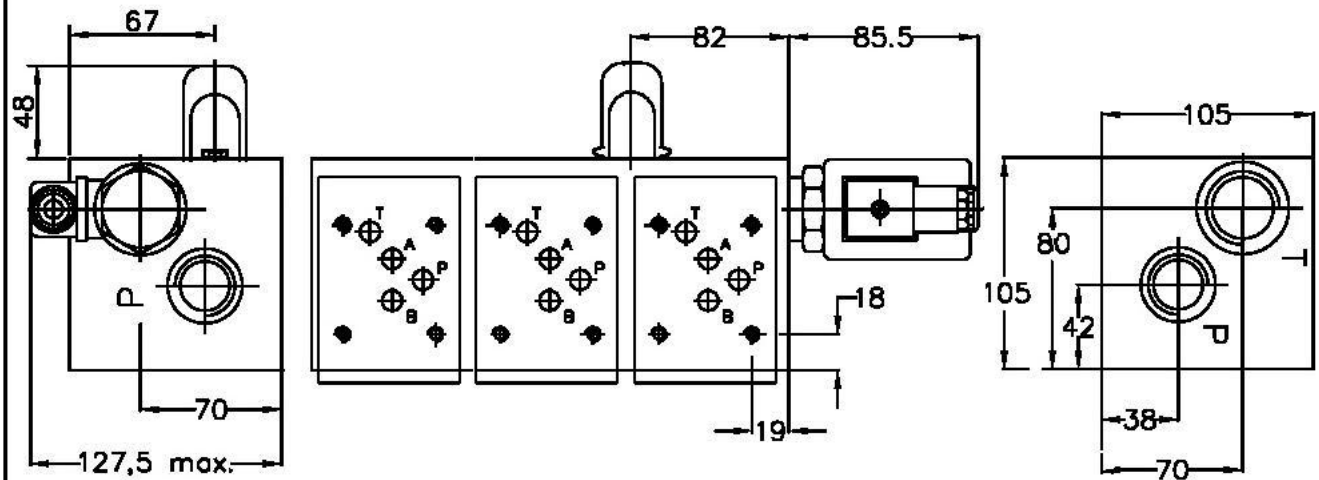


NOTA: PARA OBTENER LA REFERENCIA COMPLETA, SUSTITUIR EL ASTERISCO CON LA PRESION DE TRABAJO REQUERIDA.

PRESION DE TRABAJO
1 DE 40 A 100 BARS
2 DE 70 A 180 BARS
3 DE 100 A 320 BARS

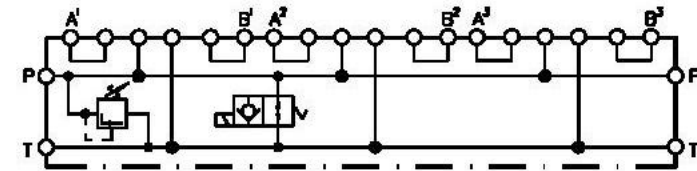
**DRAULITEK**

4.2.4 V2



BLOQUE NG-10 (CETOP 5) DE 2 A 10 ESTACIONES SALIDAS POSTERIORES CON VALVULA DE SEGURIDAD Y VALVULA DE VENTING

REFERENCIA	ESTACIONES	DIMENSIONES		SALIDAS			
		A	B	P	T	A	B
P10.2P.V1V.024.00	2	240	216	3/4"	1"	1/2"	1/2"
P10.3P.V1V.024.00	3	240	216	3/4"	1"	1/2"	1/2"
P10.4P.V1V.024.00	4	320	296	3/4"	1"	1/2"	1/2"
P10.5P.V1V.024.00	5	400	376	3/4"	1"	1/2"	1/2"
P10.6P.V1V.024.00	6	480	456	3/4"	1"	1/2"	1/2"
P10.7P.V1V.024.00	7	560	536	3/4"	1"	1/2"	1/2"
P10.8P.V1V.024.00	8	640	616	3/4"	1"	1/2"	1/2"



PRESION DE TRABAJO

1	DE 40 A 100 BARS
2	DE 70 A 180 BARS
3	DE 100 A 320 BARS